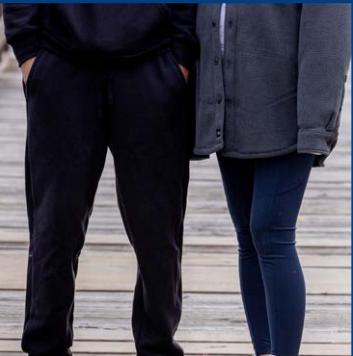


2025

# CHICAGO METROPOLITAN AGENCY FOR PLANNING

FREE!

# SOLVING FOR TOMORROW, TODAY





# A LETTER FROM THE CHICAGO METROPOLITAN AGENCY FOR PLANNING

**W**e're proud to present CMAP's 2025 annual report that highlights our achievements from the past year. And what a year it was! For the last two decades, CMAP has worked with our partners across jurisdictions and agencies to solve complex challenges and deliver real results for the people of northeastern Illinois. In this year's report, we'll showcase our history and the significant regional milestones we achieved — *together*.

## Illinois approves landmark transit legislation

The General Assembly advanced transformative legislation that delivers on the strong vision put forward in the *Plan of Action for Regional Transit*, including both funding and governance reform. Together with the CMAP Board, MPO Policy Committee, state leaders, transportation partners, advocates, and transit riders, we called for big, bold solutions that will now be realized. This demonstrates the power of regional collaboration and the value in CMAP's data-driven, consensus-based approach to problem solving.

## CMAP marks a 20-year milestone and launches the next big plan

We hosted a first-of-its-kind State of the Region event in November to celebrate our 20-year anniversary and kick off *The Century Plan*. Nearly 1,000 people — including state officials, mayors, and county board chairs, along with transportation, business, and civic stakeholders — attended and praised it as an inspiring, catalytic, and creative experience.

## Solving for tomorrow, today

*The Century Plan* will be a long-term, overarching vision for the seven-county region that will guide policies for transportation, the environment, and the economy for decades into the future. It will serve as our north star, defining what we must do together and why it matters, while providing policy guidance on how we get there. We will need to build consensus and secure bold commitments on a path for the next 20 to 30 years.

In the coming year, CMAP will engage with government, business, and civic groups, along with residents and communities, to develop the plan, with a targeted adoption by the CMAP Board and the MPO Policy Committee in fall 2027. *The Century Plan* is not just CMAP's — it's everyone's plan for a better, stronger northeastern Illinois. You're invited to join us on this formative journey to shape the future.

These are just a few examples of how CMAP is continuing its 20-year legacy of excellence and service to this region. We are excited to share more about our accomplishments in this annual report, none of which would be possible without the commitment and support from our board, committees, team members, and partners throughout northeastern Illinois.



**Erin Aleman**  
CMAP Executive Director



**Mayor Gerald R. Bennett**  
CMAP Board Chair and Palos Hills Mayor

**CONNECT  
WITH US**



Subscribe to CMAP's newsletters to get updates about transportation, accessibility, climate, and economy. Scan this QR code.

**@cmapillinois** |





## Vision

An inclusive and thriving region.



## Mission

To serve the people of the region by driving innovation, fostering shared action, and advancing toward a common vision.



## Who we are

CMAP is a federally designated metropolitan planning organization (MPO) responsible for developing the region's long-range comprehensive plan and planning and programming federal transportation dollars through a collaborative process. As the state-authorized regional planning agency for northeastern Illinois, CMAP is also responsible for managing an integrated land use and transportation planning process.

CMAP is governed by a board comprised of 18 members appointed to represent Chicago, Cook County, and the collar counties. There are 15 voting and 3 non-voting members. The Board approves the annual budget and work plan and provides operational oversight. CMAP also has several committees that advise and inform its work, in alignment with a strategic direction and long-range plan.

# CMAP serves 8.6 million residents in more than 284 municipalities across 7 counties

### Collaborate and convene

- Facilitate dialogue with government partners, community organizations, stakeholders, and the public
- Inform and engage diverse audiences in planning, consensus building, and decision making
- Work on behalf of and alongside our partners to implement ON TO 2050

### Deliver data

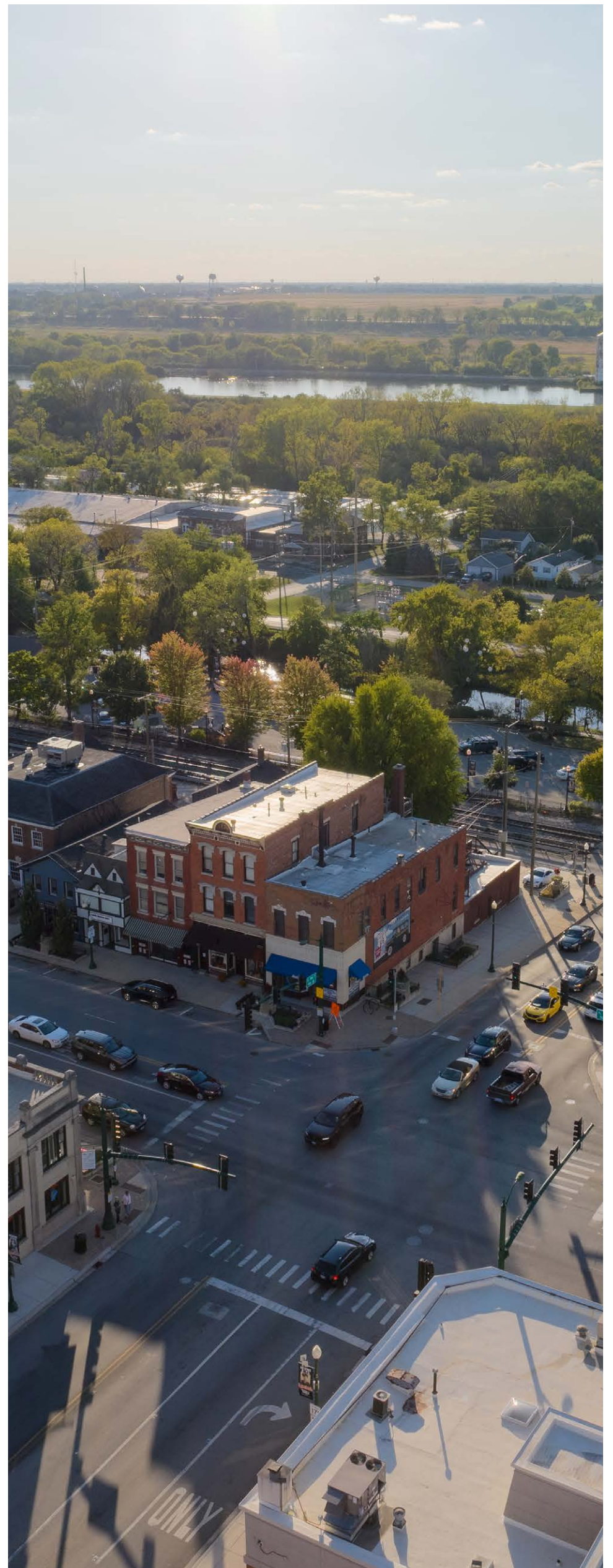
- Inform and shape policy through data research and analysis
- Serve as the region's authoritative data source
- Use data to assess complex regional issues related to travel, land use, and policy

### Plan regionally and locally

- Develop ON TO 2050 and coordinate implementation
- Strengthen communities through direct assistance, training, and resources

### Prioritize and program

- Evaluate, manage, and distribute federal transportation funds







## State of the Region event brings together leaders and stakeholders to launch *The Century Plan*

The father of urban planning and co-author of the visionary 1909 *Plan of Chicago*, Daniel Burnham, famously said, “Make no little plans.” A century later, regional leaders are embarking on the next BIG plan for the region.

Nearly 1,000 people attended the first-of-its kind State of the Region event to kick off *The Century Plan* and celebrate CMAP’s 20th anniversary. The event featured visual exhibits illustrating the agency’s history and milestones. Entertainment included a mentalist, drum line, hoop dancer, and mariachi band. Attendees also got a first look at data trends that will help drive conversations around key quality of life issues. We’re grateful to our guests and generous sponsors for an extraordinary and inspirational evening.

“ CMAP facilitates this planning process on behalf of the region, but this is not CMAP’s plan — it is everyone’s plan for a better, stronger northeastern Illinois. Building on Burnham’s legacy, we will develop an inspirational and transformative vision for the future — a plan for the region, by the region. ”

**Erin Aleman**  
CMAP Executive Director



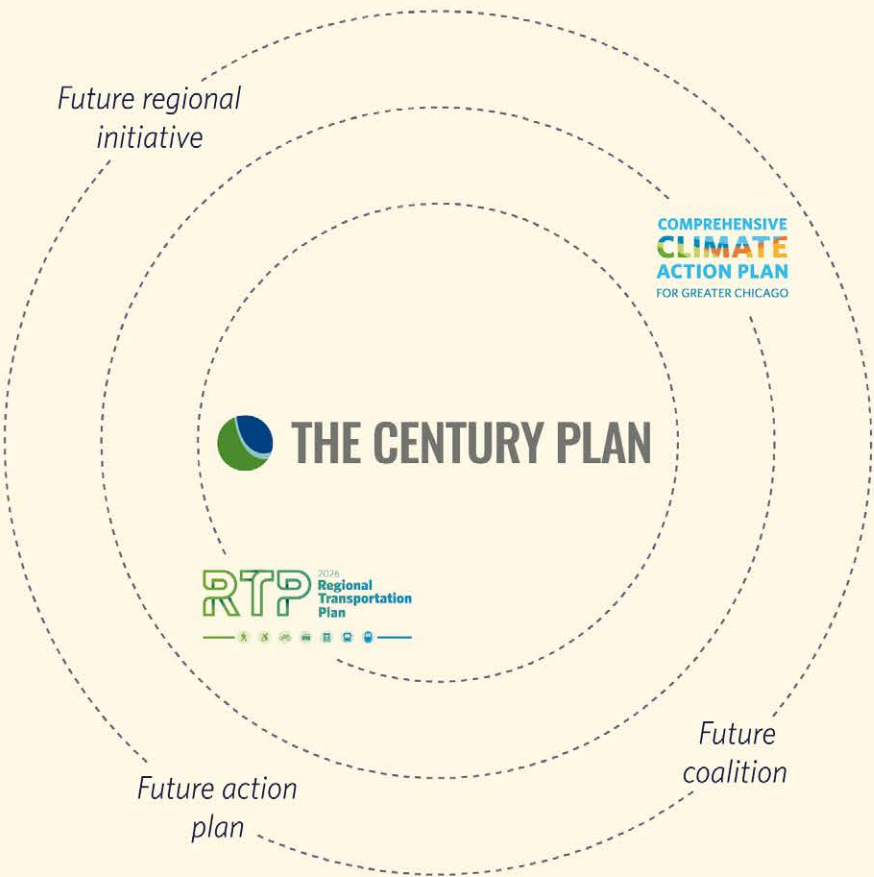


# Shaping *The Century Plan*

How will transportation evolve over the next several decades? Where will people live and work? What new industries will emerge? How can we anticipate big challenges and seize new opportunities? And what ideas, policies, and commitments do we need to provide the best quality of life for our 8 million residents and to position ourselves as a top-tier metropolitan area in a highly competitive global economy?

The *Century Plan* is a long-term vision for a better, stronger future for northeastern Illinois, guiding policies for transportation, the environment, and the economy for decades to come. Along with its affiliated plans (the *Regional Transportation Plan* and the *Comprehensive Climate Action Plan for Greater Chicago*), it will replace ON TO 2050 over time and collectively serve as the region’s comprehensive plan.

Over the next two years, CMAP will engage with government, business, and civic groups, as well as residents and communities, to discuss major challenges and opportunities facing the region. There will be plenty of opportunities to participate in meetings and build consensus, to secure bold commitments for the next 20 to 30 years. The CMAP Board and the MPO Policy Committee will take action on the plan in fall 2027. Visit [cmap.is/the-century-plan](https://cmap.is/the-century-plan) to learn more and engage with us.






## Advancing the region’s next long-range transportation plan

CMAP is developing the 2026 *Regional Transportation Plan* (RTP) for northeastern Illinois. While historically embedded within ON TO 2050, this new 2026 RTP will be released as a standalone plan that serves as the long-term blueprint for the region’s transportation system, guiding decision making and infrastructure investments over the next two decades and beyond.

Throughout 2025, CMAP deepened its engagement with partners and the public to ensure that the plan reflects the region’s needs and aspirations. The RTP is being developed through collaboration with local governments, transportation stakeholders, community organizations, and the public, and is informed by technical analysis, policy research, and extensive outreach. It seeks to answer three key questions: *What transportation system does the region want? What challenges and opportunities will shape that vision? And how will northeastern Illinois implement the system it needs for the future?*

Once adopted, the final plan will outline a shared, consensus-based strategy for investing in projects, policies, and practices that achieve the region’s vision for a multimodal transportation system — including transit, highway, freight, bicycle, pedestrian, and accessible transportation — through 2050 and beyond. Plan approval is targeted for fall 2026. Learn more at [cmap.is/rtp](https://cmap.is/rtp).



I’m the founder of *Finding Justice*, a flower and vegetable garden in West Garfield Park. I live four blocks away from the farm. I often walk from my home to the farm and I feel safe. I use the Green Line to travel from my home to downtown. It’s a short eight-minute walk and one direct train gets me where I need to go. Using the train contributes positively to my quality of life because whenever I have business downtown, I don’t have to worry about finding parking.

**LaShawn Miller**  
Founder and Owner, Finding Justice



## Advancing climate action in Greater Chicago

CMAP partnered with the Metropolitan Mayors Caucus, Northwestern Indiana Regional Planning Commission, and stakeholders across the region to create the *Comprehensive Climate Action Plan for Greater Chicago*. Funded through the U.S. Environmental Protection Agency’s Climate Pollution Reduction Grant program, this plan will identify solutions to address all the significant sources of greenhouse gas emissions in the three-state region (which includes nine counties in Illinois, three in Indiana, and one in Wisconsin).

In 2025, the team identified emissions reduction strategies, modeled their effects on the region’s emissions and communities, vetted those results with working groups, conducted public engagement, and drafted the plan. We’re looking forward to sharing the plan with the region in early 2026! Learn more at [cmap.is/ccap](https://cmap.is/ccap).



For this plan to work, it needs to be both ambitious and implementable. We focused on identifying specific actions local governments and regional partners can realistically advance. And we centered the plan around the benefits people care about: cleaner air, healthier communities, future energy cost savings, and strong workforce and economic opportunities.

**Carolyn Schofield**  
CMAP Board Representative, Comprehensive Climate Action Plan Steering Committee



# PASSION AND EXCELLENCE

From bold leadership and innovative transportation solutions, to accessible engagements and exemplary data and design, we couldn't be prouder of the awards CMAP received this year. These recognitions put a spotlight on some of the agency's extraordinary teams who serve with passion and lead with excellence.



## Women's Transportation Seminar

CMAP's *Plan of Action for Regional Transit* received the Innovative Transportation Solutions Award, which recognizes the creative work of an outstanding and innovative transportation project or service that improves the quality of life for its users and the community.



## Civic Federation in partnership with Motorola Solutions Foundation

CMAP's Executive Director Erin Aleman received the Motorola Solutions Foundation Excellence in Public Service Award, which recognizes her leadership in addressing the state of the mass transit system in Illinois.



*I'm very grateful that the Civic Federation takes it upon itself to honor people who are in public service. Erin, on the basis of the work that CMAP has done, is deserving... she's been doing the difficult work of trying to bring people together across the region to focus not just on transportation and infrastructure, but on environmental resilience. There's nobody else that's doing that work, so that makes CMAP kind of a unicorn.*

**Hon. Toni Preckwinkle**

President, Cook County Board of Commissioners





**3CMA**  
CMAP's website redesign received a first place Savvy Award and its 2024 annual report received a second place Silver Circle Savvy Award from the nation's premiere network of government communicators, which recognizes the best of the best in communications.



**American Planning Association - Illinois Chapter**  
CMAP's Accessible Public Engagement Training received the Advancing Diversity and Social Change Award, which recognizes outstanding examples of planning work and those who seek to advance the planning profession in Illinois.

... “  
*This effort is a win for the planning field at large, equipping practitioners with tools to proactively lower the barrier to participation... The result is a user-friendly resource that is already shaping how agencies approach engagement. This work raises the standard for what inclusive planning can and should look like.*

**APA-IL Chapter Award Committee**  
...”



**American Planning Association**  
CMAP's Job Quality and Access Tool received the 2025 Innovation in Economic Development Implementation Award, which recognizes innovative projects with real-world impact, community engagement, and advancing equitable planning for stronger economies.

**EXPERTS IN THE SPOTLIGHT**

CMAP's subject matter experts are often called upon to share their knowledge, data, and insights. Our team members regularly participate in conferences, serve on panels, and give interviews to the media at local, regional, and national levels.

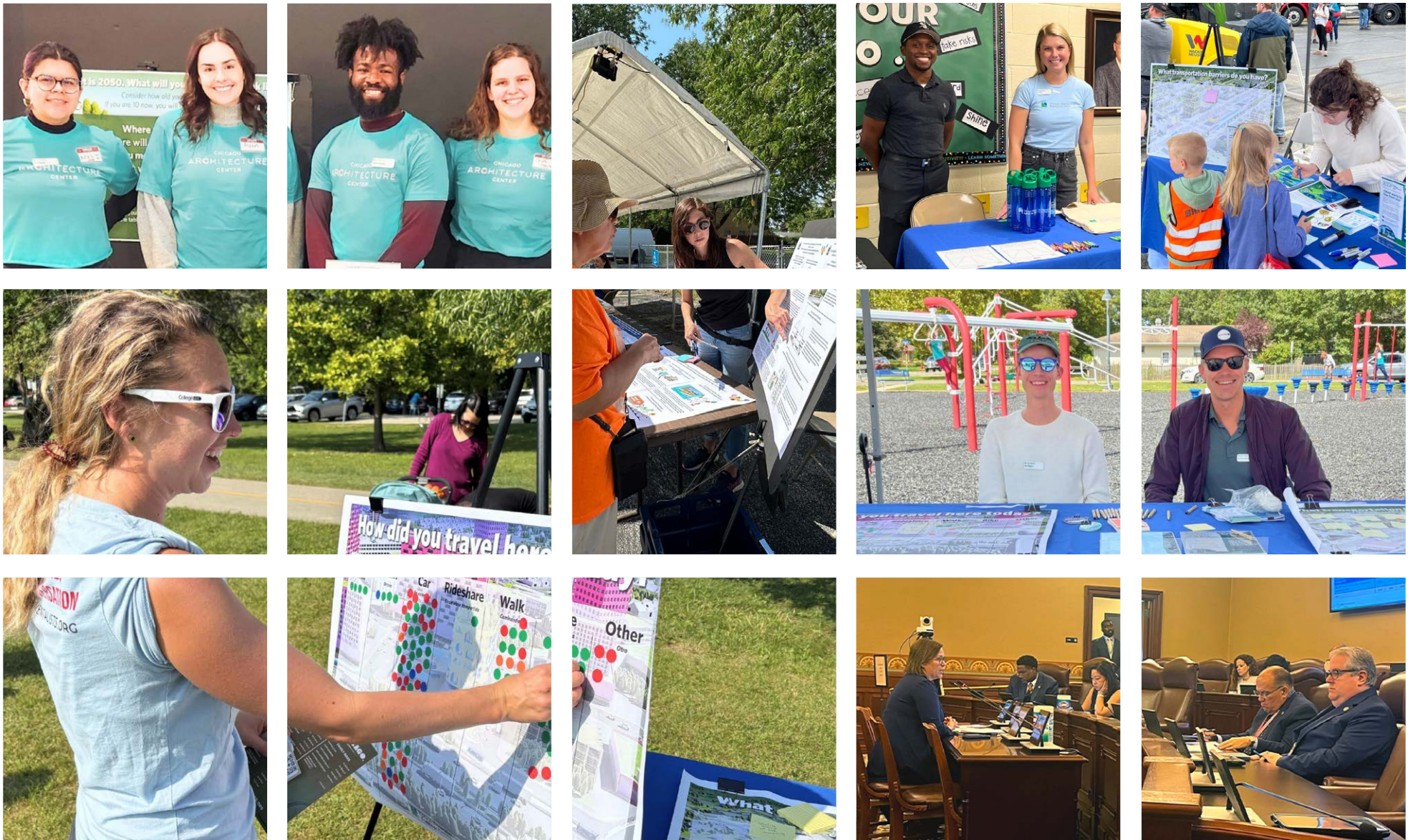
This year, several CMAP team members presented at the American Planning Association - Illinois Chapter State Conference, bringing planning stories to life with panels on a variety of topics including transit-oriented development, decarbonization, housing, accessibility, community engagement, and more.





# DATA AND INFLUENCE

**C**MAP influences change with the power of data and the stories it tells. We collect, analyze, forecast, and model data. We conduct research and analysis and deliver data, tools, trainings, and studies to inform decision making, shape policy, and drive regional and local action. And we share information and resources to build trust, grow knowledge, and guide change.



## New data helps communities make informed housing decisions



**C**ommunities now have access to data on housing demand, supply, and affordability. The Local Housing Profiles, published in partnership with the DePaul University Institute for Housing Studies, cover each of the region's 7 counties, 284 municipalities, and 77 Chicago community areas. The profiles are a resource for policymakers, planners, researchers, and residents. Local governments can more effectively plan for ongoing housing development if they have access to reliable, accessible, and usable information on housing market conditions in their communities. Learn more about your community's housing options by visiting [cmap.is/housing-profiles](https://cmap.is/housing-profiles).



*The Local Housing Profiles are a great resource to understand key information about a community. Thank you Chicago Metropolitan Agency for Planning and the Institute for Housing Studies at DePaul University for this relevant and valuable information.*

**Consuelo Arguilles**

Assistant Director of Community Development,  
Village of Addison

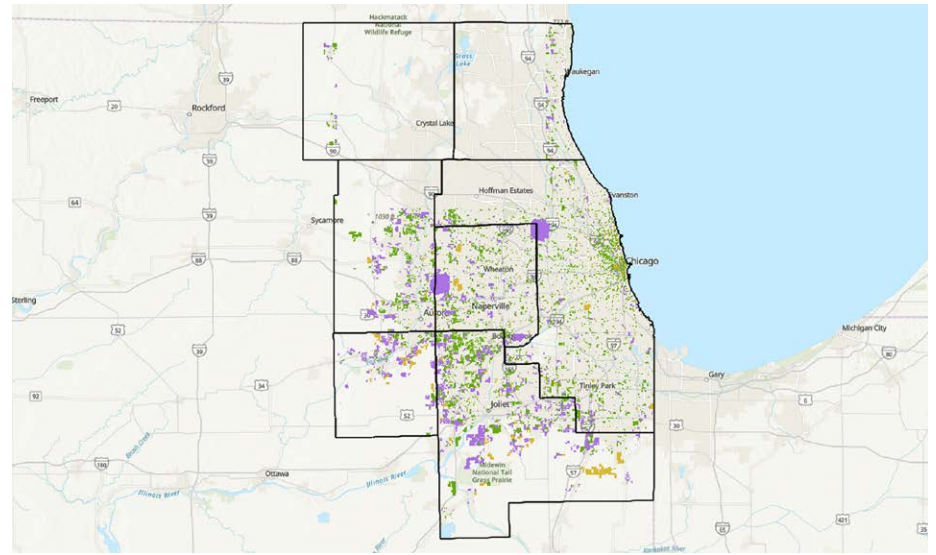


## Tracking growth and redevelopments with the Northeastern Illinois Development Database

Since 1987, CMAP (and its predecessor agency) has tracked significant developments and redevelopments in the region to inform the local forecast model, which predicts household and job placements.

For the first time this year, CMAP made that data publicly accessible through the Northeastern Illinois Development Database interactive map. Using the map, municipalities can view and submit proposed, in-progress, or completed developments. They also can download the data from the CMAP Data Hub.

Thanks to municipalities around the region, we were able to add more than 400 developments to the database. Learn more about your community's growth and help us accurately represent your community in regional forecasts at [cmap.is/NDD](https://cmap.is/NDD).



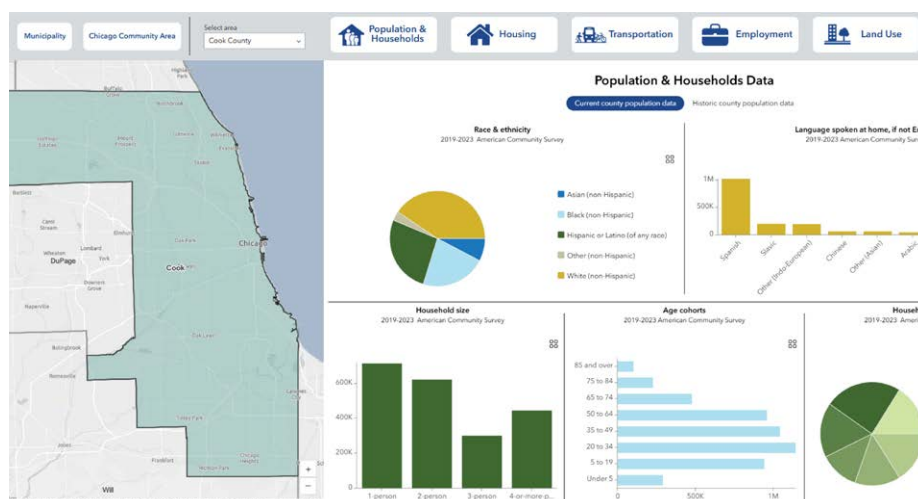
The Northeastern Illinois Development Database map was featured in the [Esri Map Gallery](#), which showcases innovative maps that highlight the powerful capabilities of GIS technology.



CMAP planners George Perkins Anene, Maddy Clowse, and Elizabeth Miller out in the region collecting data and engaging with communities.

## Updated Community Data Snapshots include new data on development, demographics, housing, and more

CMAP updated its popular Community Data Snapshots, which summarize demographics, housing, employment, transportation habits, and other key community details for the region's counties and municipalities, as well as Chicago community areas. Significant data updates this year included housing and transportation cost comparisons and annual vehicle miles traveled. More than 23,000 site visitors explored new data on uninsured populations and county-level development, including residential and non-residential space. Learn about your community at [cmap.is/CDS](https://cmap.is/CDS).



The Community Data Snapshots help local leaders and the public track progress and make informed decisions in their communities.



# STRENGTHENED COMMUNITIES

**S**tronger communities make for a stronger region. With an emphasis on reinvestment and infrastructure to sustain vibrant communities, we can help the region compete and thrive, while offering residents the chance to improve their quality of life.

**F**or more than a decade, CMAP's technical assistance program has provided planning support to local communities. For those that can't do it on their own, CMAP is happy to help bridge the gap.

This year, the [technical assistance program](#) awarded 30 new projects following a joint call with the Regional Transportation Authority. The selected projects will support Americans with Disabilities Act compliance, bicycle and pedestrian safety, capital improvements, and other local priorities.

CMAP's planning team helped communities across the region advance safer, more connected, and more accessible transportation. From corridor planning in Franklin Park and safety strategies in Cicero, to bike and pedestrian plans in Alsip and Richmond, to ADA transition plans in Hillside and Chicago Heights, to a comprehensive plan in Harvey and a transit coordination study

in northwest Cook County — these efforts reflect our commitment to local priorities and regional progress. Congratulations to our local partners!



*CMAP was very creative in working with the village to reach out to Lansing residents through surveys and other 'hands-on' approaches to establish capital proposals that will be included in the village budget and implemented. CMAP's contribution to Lansing's planning efforts can simply not be measured and played a significant role in a very important initiative for the village's board and its residents.*

**Brian Hanigan**

Finance Director, Village of Lansing

## ENGAGEMENT AND COLLABORATION

**C**MAP serves the region's people — who are at the core of our work — by prioritizing connections, engaging meaningfully, and collaborating with partners at all levels. We rely on strong partnerships with our federal, state, and local partners to make northeastern Illinois a stronger, more resilient place to live.

### Advocacy agenda details policy positions and priorities that will guide the region

CMAP produces a biennial advocacy agenda that details priorities to help the region address challenges, seize opportunities, and continue to thrive.

For 2025 and 2026, our federal and state legislative priorities include:

- Developing stronger policies that enhance resilience and reduce emissions and congestion
- Increasing opportunities for comprehensive planning and economic development
- Securing a dedicated annual appropriation from the state to support a wider range of technical assistance offerings — the region's cities, villages, and counties will benefit for years to come with a modest investment in CMAP
- Sustainably funding transportation
- And more, with actionable steps, found [in the agenda](#)



CMAP's advocacy agenda offers policy positions and priorities that can help the region address challenges and opportunities at every level of government.

### Regional partners collaborate to prioritize transportation investments

CMAP once again collaborated with stakeholders throughout northeastern Illinois to achieve consensus around prioritizing transportation projects for federal investment. The highest priority projects for 2025 and 2026 are reflected in the [Northeastern Illinois Priority Investments booklet](#).

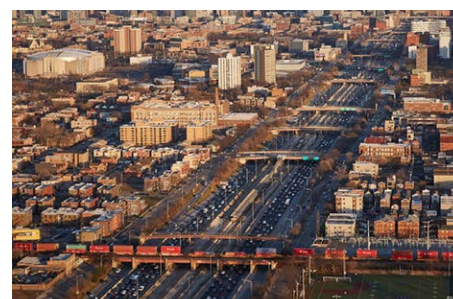
The top three priority investments include:

- Chicago Hub Improvement Program
- I-290 Blue Line Corridor Program
- 75th Street Corridor Improvement Project

Our region is connected and united. Recognizing the transformative impact of federal investments, CMAP stands ready alongside our partners to rebuild and reimagine our infrastructure to be more sustainable, resilient, accessible, and safe.



The Chicago Hub Improvement Program will modernize critical rail infrastructure and revitalize historic Chicago Union Station.



The I-290 Blue Line Program will invest in infrastructure to improve the corridor.



The 75th Street Corridor Project will deliver economic and environmental benefits.





### Connecting with local government partners to produce results

To deepen relationships with our government partners, the Local Government Network (LGN) program pairs each of our region's 284 municipalities and 7 counties with a CMAP liaison. This year, the LGN program had 11 successful initiatives that connected communities with funding opportunities, training, and resources.

### Northeastern Illinois speaks with one voice

CMAP collaborated with a diverse group of regional transportation implementers, civic and advocacy organizations, and labor partners to develop [One Regional Voice 2025](#), which includes guiding principles for the next federal surface transportation reauthorization legislation. The region is united in its support of a transportation system that works better for everyone, embodies the Safe System Approach, fosters a robust regional economy, and enhances quality of life for residents across northeastern Illinois.

The shared principles include:

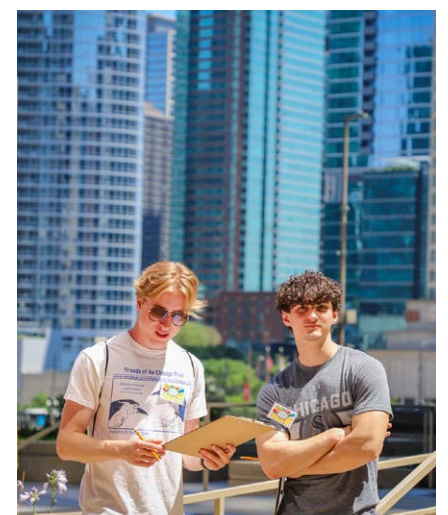
- Efficient public transportation and passenger rail
- Enhanced safety
- Maintained bridges
- Multimodal freight
- Performance-based programming
- Resilient transportation systems
- Robust, durable revenues
- Technological innovation

### Future Leaders in Planning marks its 17th year

Crafting the future of the region that we want requires investing in our young leaders today. CMAP continues this commitment through its [Future Leaders in Planning](#) (FLIP) program — going 17 years strong.

This summer, we welcomed 34 high school students from four counties to explore the urban planning field and how it shapes our communities. Students visited the Chicago Architecture Center to learn about how changing needs over time have affected physical infrastructure, as well as Horner Park to explore the Coil Serpent Mound through the lens of art, landscape architecture, and indigenous tradition. They also joined the O'Hare Department of Aviation for an inside look at airfield operations; went to Chinatown and Bronzeville for walking tours with community leaders who shared historic planning practices and present day implications; and toured the Hatchery and surrounding East Garfield Park neighborhood to understand the economic development opportunities this unique space provides.

The students also engaged with CMAP team members to learn about accessibility, communications and engagement, housing, Geographic Information Systems, and scenario planning. Professionals from the American Planning Association - Illinois Chapter met with FLIP students on the last day of the program and guided them through an activity, mapping out potential paths to a career in planning. Each student received a certificate and stipend upon completion of the program.





# 20 YEARS OF EXCELLENCE AT THE CHICAGO

## 2007

The Chicago Metropolitan Agency for Planning is created, merging the Chicago Area Transportation Study and the Northeastern Illinois Planning Commission. This new regional government agency works on behalf of the 7 counties (Cook, DuPage, Kane, Kendall, Lake, McHenry, and Will), more than 250 municipalities, and 8.3 million residents of northeastern Illinois.

Randy Blankenhorn is named CMAP's first executive director and serves in this position for nine years.



## 2008

The Future Leaders in Planning program launches, providing a summer immersion experience for high school students to explore the planning field and how it shapes our communities, as well as connect with experts and changemakers in civic engagement and community development.

## 2010

The GO TO 2040 regional comprehensive plan is adopted unanimously by leaders from across seven counties in October 2010 after two years of research, policy analysis, and extensive public outreach. It is the first regional plan since Daniel Burnham and Edward H. Bennett published the 1909 *Plan of Chicago* more than a hundred years ago.

CMAP also creates the Technical Assistance program to provide planning support to communities across the region and advance principles of the comprehensive regional plan. Over the next 15 years, the program helps strengthen over 100 municipalities with 370 plans — and counting.



## 2013

CMAP launches its first public data sharing platform that enables anyone with an internet connection to access high-quality data to inform planning and policy decisions across the region.

## 2015

Joe Szabo becomes CMAP's second executive director and serves in this position for four years.



## 2017

A new online version of the Transportation Improvement Program launches, giving partners and the public unprecedented access to real-time transportation funding and implementation details for thousands of transportation projects across the region.

The region agrees to shift to a new data-driven model for the allocation of federal Surface Transportation Program (STP) funding, creating a regional shared fund that encourages strong partnerships and advances projects that local agencies cannot readily fund on their own. The agreement establishes the STP Project Selection Committee to oversee program development and maximize federal funding opportunities.





# METROPOLITAN AGENCY FOR PLANNING

## 2018

ON TO 2050 is adopted by the CMAP Board and MPO Policy Committee. This comprehensive regional plan helps northeastern Illinois' 7 counties and 284 municipalities implement strategies that address transportation, housing, economic development, open space, the environment, and other quality-of-life issues.

## ON TO 2050

## 2019

CMAP earns accolades for its work on the ON TO 2050 plan, receiving the Daniel Burnham Award for Outstanding Comprehensive Plan from the American Planning Association - Illinois Chapter.

Also, Erin Aleman becomes CMAP's executive director. She is the first woman to serve in this role and the first professional planner to lead the agency.



## 2021

CMAP convenes regional stakeholders and delivers a first-ever consensus list of the region's highest-priority transportation projects. The agency continues to partner with federal leaders and bring the region together to maximize funding opportunities.

The Local Government Network also launches, pairing each of the region's 284 municipalities with a CMAP team member to build stronger relationships and connections with our government partners.

## 2022

CMAP's Accessible Communities program launches, providing in-person training, guidance, and resources to improve Americans with Disabilities Act compliance throughout the region.

## 2023

The Greater Chicagoland Economic Partnership launches — set in motion by CMAP, in partnership with the Brookings Institution and the Chicago Community Trust — which leads to a trailblazing regional economic collaboration between the region's counties and the City of Chicago.

CMAP also delivers the *Plan of Action for Regional Transit* to provide big, bold solutions to transform and strengthen northeastern Illinois' transit system.

## 2024

The region takes meaningful steps toward saving lives on our roadways with the adoption of six countywide safety action plans. The initiative is managed by CMAP and the Illinois Department of Transportation, with federal grant funding from the Safe Streets and Roads for All program.

## 2025

CMAP celebrates 20 years serving northeastern Illinois!

*The Century Plan* launches — a vision for our region, by our region — to guide policies for transportation, the environment, and the economy, decades into the future.



## THE CENTURY PLAN



# A TRANSPORTATION SYSTEM THAT WORKS BETTER FOR EVERYONE

To advance the regional goal of a transportation system that works better for everyone, CMAP allocates federal transportation funds, manages the transportation planning process, develops the long-range transportation plan, and produces the Transportation Improvement Program and the Unified Planning Work Program. We also maintain travel models and data resources to support air quality conformity determinations, transportation analyses, and long- and short-range planning initiatives.



CMAP, elected officials, and transit advocates celebrate the passage of historic legislation strengthening public transit in northeastern Illinois.

It was a landmark year for transit investment and governance reform, marked by one of the most significant milestones for the region's transit system in a generation. In partnership with leaders across the region, CMAP helped shape and advance a comprehensive legislative solution to the looming transit fiscal cliff — an outcome that threatened the stability and reliability of Chicago Transit Authority, Metra, and Pace Suburban Bus service for millions of residents. This effort culminated in the passage of Senate Bill 2111, which will deliver new, sustained operating revenue and essential governance reforms. Beyond the final package, CMAP also released a major analytical contribution this year in the form of *Modernizing Illinois' Sales Tax*, which laid out revenue options as durable mechanisms to support transit, such as expanding the sales tax base to include consumer services.

CMAP served as the region's technical lead and convener, supplying research, financial modeling, scenario analysis, and policy framework that guided partners and informed lawmakers. Staff members testified before

legislative committees, briefed local and regional leaders, published an op-ed, and worked closely with advocates to build consensus around a shared path forward. The passage of SB 2111 is a major achievement not only for transit riders today, but for future generations who rely on an interconnected and resilient system. CMAP's contributions — reflected in the final bill and through proactive work like the sales-tax reform analysis — were instrumental in turning a moment of uncertainty into a moment of progress, ensuring that the region continues advancing toward the goals of ON TO 2050 and the 2026 RTP.

... “ .....  
*Democrat Ram Villivalam, the state senator who championed the legislation, says it helped that the bill had been rooted in ‘good public policy’ from the beginning with the recommendations from CMAP.*

Governing Magazine

..... ” ...





Governor JB Pritzker signed the Northern Illinois Transit Authority (NITA) Act in December 2025 at Union Station.



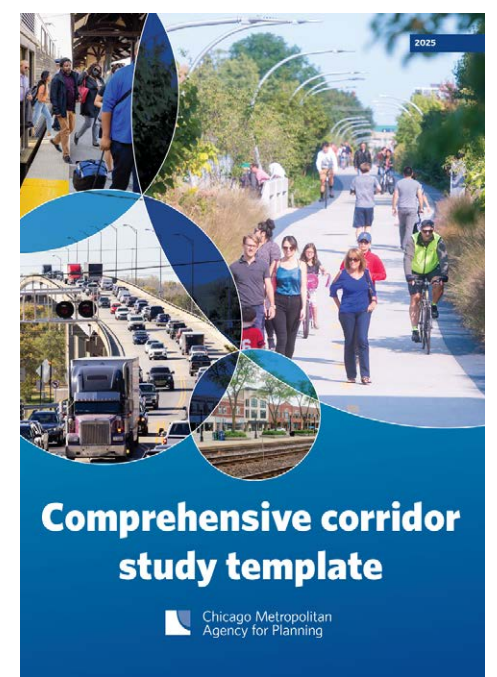
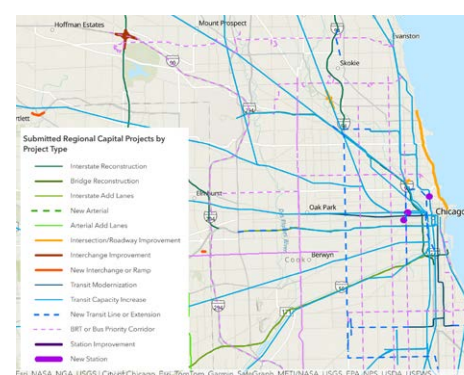
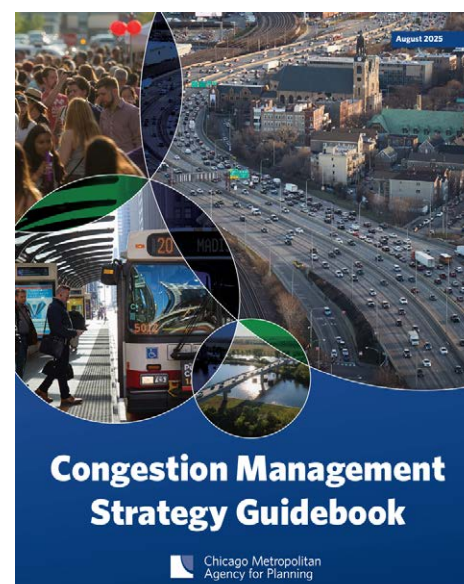
Left to right: State Senator Ram Villivalam, State Representative Eva-Dina Delgado, and Erin Aleman pose with signed NITA Act.

## Regional Transportation Plan advances key components

**C**MAP made significant progress this year in developing the 2026 RTP, moving from foundational work into the production of core plan elements. This work reflects extensive research, technical analysis, partner collaboration, and public engagement across the region.

Major accomplishments include:

- **Congestion management strategy development:** includes the [Congestion Management Strategy Guidebook](#), which provides partners with practical strategies and a Mobility Solution Ladder framework to evaluate and address congestion, and the complementary [Comprehensive Corridor Study Template](#) which supports a consistent, regionwide approach along the most congested and unreliable corridors.
- **Emerging Priorities report:** identifies the issues most likely to shape the region's transportation future — ranging from climate resilience and safety to equitable access, system reliability, demographic shifts, and technological change.
- **Existing Conditions report:** provides a comprehensive picture of today's transportation system performance, detailing conditions across transit, highway, freight, bicycle, pedestrian, and accessible transportation networks. It also documents challenges, opportunities, and cross-cutting trends that will inform strategies and investments in the final plan.
- **Financial plan development:** updates long-term revenue forecasts, system needs assessment, and funding gap evaluations, as well as alternative revenue mechanisms that will help shape the region's broader conversation around long-term transit and transportation funding.
- **Regional capital projects:** reflects major investments with the potential to significantly influence regional mobility, safety, economic competitiveness, and system performance, with updated criteria and evaluation methods developed alongside regional partners.
- **Regional and local socioeconomic forecasts:** calculates population and employment through 2050, powered by the Northeastern Illinois Development Database, which serve as a critical input for travel demand modeling, revenue projections, and long-range scenario planning.



**THANK  
YOU**

To the Transportation Committee for their time, energy, and expertise. Your participation this year helped shape, influence, and improve our region, and your commitment to building a better transportation system for everyone is reflected in our many accomplishments.





An ON TO 2050 rendering of a corridor with safety, resilience, and community benefits.

### The I-290 Blue Line Corridor project advances

**C**MAP, the Illinois Department of Transportation, and the Chicago Transit Authority continued their partnership on a unified approach to modernize and advance the I-290 Blue Line Corridor. Through the Corridor Development Office (CDO), the partners launched a Program Governance Structure with working committees and project management tools to engage with stakeholders often, align and streamline work streams across partners, and document key decisions. Working within this framework, the CDO compiled a comprehensive overview of ongoing and proposed projects across the corridor's multiple agencies and jurisdictions and completed a full cost and schedule risk analysis report.

The CDO began discussions with corridor communities to understand what their concerns and hopes are for the future. They also started working with partners to identify options for a feasible and sustainable funding and finance plan for this transformative multimodal program. In the coming year, the CDO will develop a vision that looks past solely transportation solutions to improve mobility, accessibility, and quality of life for residents, motorists, transit riders, and corridor stakeholders.



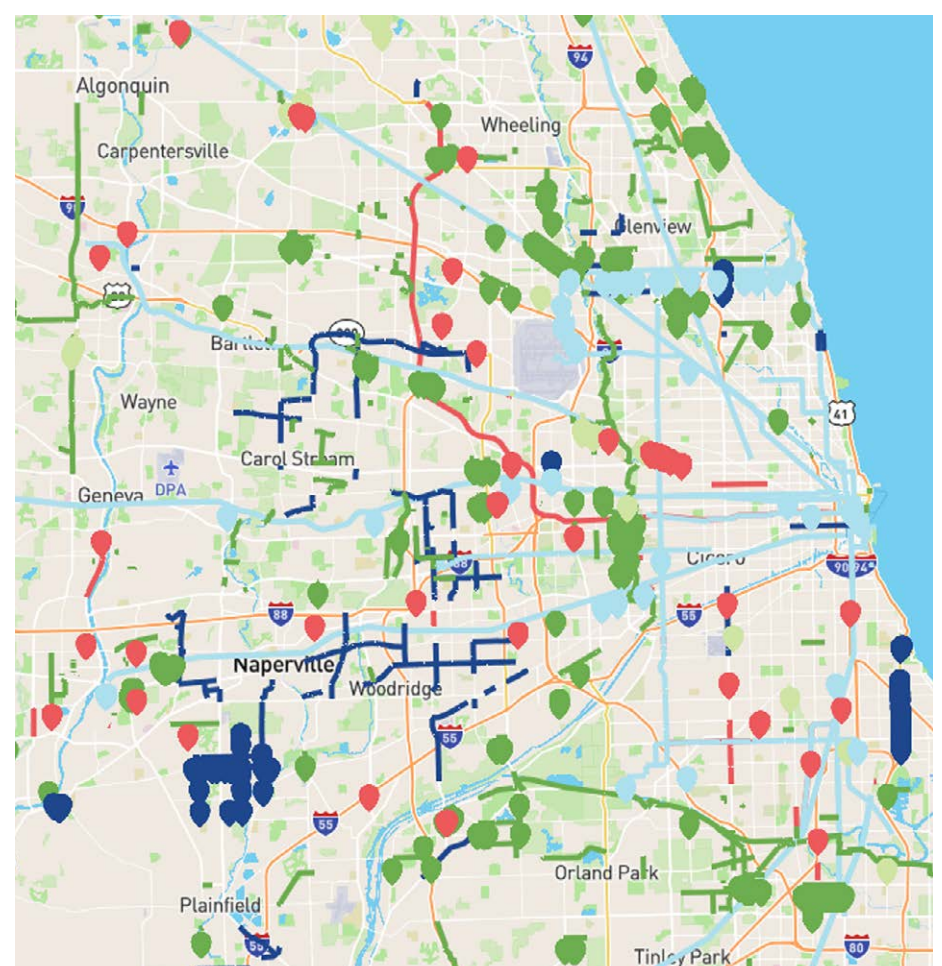
CDO partners strategize and brainstorm a new vision for the corridor.

### Region advances 40 projects totaling \$290 million in federal investments

As the metropolitan planning organization for northeastern Illinois, CMAP manages the five-year [Transportation Improvement Program \(TIP\)](#) which includes projects that use federal transportation funds. Those federal programs include the Congestion Mitigation and Air Quality Improvement Program, Surface Transportation Program Shared Fund, and the locally programmed Transportation Alternatives Program. Projects funded under these programs include road maintenance and expansion, capital improvements to transit stations, rail and bus networks, bicycle and pedestrian networks, signal systems, bridge repair, intersection improvements, and more.

In 2025, regional transportation decision-makers approved 40 new projects totaling \$290 million in federal funds that will rebuild roads, bridges, and train stations; add electric locomotives; expand bike and pedestrian facilities; and reduce delays at intersections and railroad crossings across northeastern Illinois.

TIP updates are done in close collaboration with regional transportation partners through a call for projects, an agreed-upon methodology, and evaluation by multi-agency project selection committees. The newly launched [eTip website](#) provides improved access to information about federally funded transportation projects. With an interactive map — and the ability to filter by geography, type, funding, and year — it's easier to see what's happening in your community and across the region.



The new eTip website features an interactive map of projects.



## ACCESSIBILITY AND SAFETY

### Making travel safer for everyone

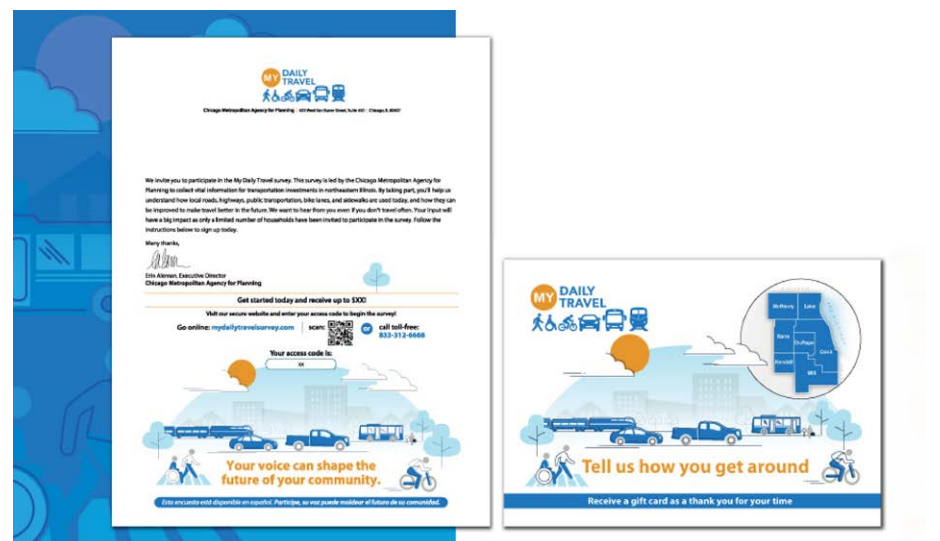
A first-of-its-kind regional safety initiative achieved a major milestone with the adoption of countywide safety action plans for Cook, DuPage, Kane, Lake, McHenry, and Will counties. The safety action plans are roadmaps for improving traffic safety by reducing the risk of death and serious injury on roadways throughout the region, particularly for people walking and biking, and for communities with disproportionately high crash rates.

The plans were informed by robust public engagement, including in-person events as well as an interactive online platform where 3,000 people identified more than 4,500 safety hot spots in their communities. With the plans adopted, participating counties and local governments are eligible to apply for federal implementation funding.



### My Daily Travel survey completes first phase

CMAP reached a major milestone as Phase 1 of the My Daily Travel household survey wrapped up. Thousands of residents across all seven counties provided insights into their daily travel patterns, helping CMAP begin to assemble one of the most comprehensive travel behavior datasets in the region. The goal is to get a complete picture of regional transportation patterns to understand how people use highways, public transit, bike lanes, and sidewalk today — and how they can be improved to make travel better in the future. This information will support the agency's travel demand model, analysis for the 2026 RTP, and future transportation investment decisions.



Examples of the letter and postcard sent to households, inviting them to take the My Daily Travel survey.



### Improving accessibility at the local level

CMAP's Accessible Communities program provided direct support to municipalities in the region to improve accessibility and Americans with Disabilities Act (ADA) compliance:

- The Accessible Public Engagement Toolkit was released along with local government training, which covered legal requirements and best practices for in-person and virtual community engagement. This project received the American Planning Association – Illinois Chapter Advancing Diversity and Social Change Award.
- The Regional Mobility Council — a cohort of community-based organizations that functions as an advisory committee — launched, providing feedback and recommendations on CMAP's transportation and mobility work from the perspective of people with disabilities.
- The Regional ADA Coordinators Group continued to connect municipal ADA coordinators in the region with actionable resources and opportunities to learn from each other.
- Communities in the region received direct technical assistance from CMAP to create ADA transition plans for streets, sidewalks, crosswalks, and other public right-of-way areas. Seven plans were completed in 2025, with another five due to wrap in spring 2026. These transition plans will help communities prioritize and plan for accessibility improvements while satisfying ADA compliance requirements.



# A REGION THAT MITIGATES AND ADAPTS TO THE IMPACTS OF CLIMATE

To advance the regional goal of mitigating and adapting to the impacts of adverse environmental conditions, CMAP leads collaborative efforts and continues to produce valuable data, analysis, and resources that support local and regional climate action and resilience planning. This includes creating resilient and livable communities by reducing emissions and re-envisioning how infrastructure is built and maintained to reflect a changing climate. It also includes improving water quality, conserving water supplies, and maintaining water infrastructure to protect natural resources.



The steering committee was made up of implementers, subject matter experts, and leaders from impacted communities across a 13-county and 3-state area known as Greater Chicago.

## Developing the *Comprehensive Climate Action Plan* for Greater Chicago

This year, the *Comprehensive Climate Action Plan* development team identified emissions reduction strategies for each sector: transportation, buildings, industry, waste, water and wastewater, and agriculture. They modeled each sector's effects on the region's emissions and communities, and vetted those results with the steering committee, working groups, and the CMAP Climate Committee, further refining the strategies and models based on feedback.

The team also conducted public engagement — including working group meetings, community workshops, and a questionnaire — and used that feedback to inform plan recommendations. These engagements focused on identifying community priorities, raising awareness of the benefits of emissions reduction, and building capacity for continued collaboration in climate action. Stay tuned for the plan's release in early 2026 at [cmap.is/ccap](https://cmap.is/ccap).

**THANK  
YOU**

We're thankful to the members of the CMAP Climate Committee, CCAP Steering Committee, and the buildings, community, industry, and transportation working groups for their valuable guidance in shaping the plan, confirming draft recommendations, and reviewing results.



Left to right: CMAP climate experts Kate Evasic, Kelsey Pudlock, Mitch Hirst, and Nora Beck.





Water plays an essential role in sustaining economic prosperity and environmental health in the region.

## Protecting our most precious resource: water

**C**ommunities across northeastern Illinois face growing water supply challenges. Acting today will help preserve a sustainable water supply for future generations. To help the region achieve this goal, CMAP completed three major projects:

### Securing Illinois' Groundwater Future

A review of the 1983 Water Use Act and high-capacity well review process

Chicago Metropolitan  
Agency for Planning

*Securing Illinois' Groundwater Future* examines the Illinois 1983 Water Use Act, assesses the high-capacity well review process, and draws insights from groundwater governance practices in neighboring states. Our groundwater — long considered abundant — is under increasing pressure from overuse and inadequate administration. CMAP offers recommendations to modernize Illinois' approach. Learn more at [cmap.is/groundwater-report](https://cmap.is/groundwater-report).



While Lake Michigan, the Fox and Kankakee rivers, and groundwater aquifers currently provide clean water, their capacity to serve the region's needs is not limitless.

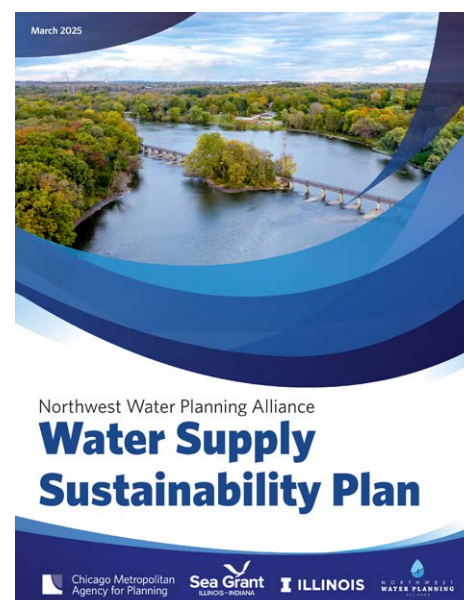
### Regional Water Demand Forecast for Northeastern Illinois 2020 - 2050

Chicago Metropolitan  
Agency for Planning

Sea Grant  
ILLINOIS-INDIANA

ILLINOIS

CMAP, the Illinois-Indiana Sea Grant, and the University of Illinois Extension updated the *Regional Water Demand Forecast*, which compares projected demand with the amount of water that can be sustainably removed without causing further desaturation of deep aquifers or harming aquatic ecosystems. This forecast estimates future water demand to the year 2050 and can help local and regional planners understand conditions and how to act to conserve water, protect supplies, and explore alternative drinking water sources. Learn more at [cmap.is/wdf](https://cmap.is/wdf).



Northwest Water Planning Alliance

### Water Supply Sustainability Plan

Chicago Metropolitan  
Agency for Planning

Sea Grant  
ILLINOIS-INDIANA

ILLINOIS

WATER PLANNING

CMAP, in partnership with the Northwest Water Planning Alliance (NWPAA) and the Illinois-Indiana Sea Grant, developed the *Water Supply Sustainability Plan* to help communities better understand their water conditions and make sustainable water supply choices for the future. While designed for the NWPAA region (a coalition of 5 councils of government representing over 80 communities and unincorporated areas in DeKalb, Kane, Kendall, Lake, and McHenry counties) the plan includes strategies, case studies, and resources that can be useful to all our region's communities. Learn more at [cmap.is/nwpa-plan](https://cmap.is/nwpa-plan).



# A ROBUST AND INCLUSIVE REGIONAL ECONOMY

**T**o advance the regional goal of a robust and inclusive economy, CMAP promotes inclusive growth and access to economic opportunities, coordinating strategies to develop a competitive global identity and outcompete peer regions economically. Our region's economic competitive advantage is its people. With the country's third-largest labor force with over five million workers, companies, investment firms, and developers continue to shortlist Chicagoland. However, like the rest of the country, we're facing a housing crisis that could have long-term economic consequences. The CMAP team has been part of an emerging regional effort to address this challenge by working with Lake, Kane, and McHenry counties to take the necessary steps that ensure we're making the development process for workforce housing as attractive as possible.



Northeastern Illinois has the most diversified large metropolitan economy in the U.S. and a vibrant quality of life.

## Insights and support at the regional level

**C**MAP continued to build out and promote the Job Quality and Access Tool, which offers meaningful insights into Chicagoland's job market. This resource helps communities, economic developers, and local officials better understand the quality of the job opportunity for their area.

Similarly, the Northeastern Illinois Development Database continued to track the development landscape. In a year marked by uncertainty and delays, our region saw more than 400 qualifying developments — higher than in the previous two years — demonstrating that our economic resilience and market continue to be attractive for investment.

We also continued to support the Greater Chicagoland Economic Partnership which promotes the region's assets — extensive freight infrastructure, diverse talent, strong exporting industries, world-class research institutions, and culture — and makes sure that ongoing development is inclusive to every part of our region.

**THANK  
YOU**

We extend our sincere thanks to the Regional Economy Committee members for dedicating their time and insights, supporting some of the most consequential economic activities in northeastern Illinois.

## CMAP and Lake County partner to expand housing with support from Schreiber Philanthropy

To help fuel economic growth, Lake County and CMAP, with support from Schreiber Philanthropy, teamed up to expand affordable and accessible housing in Illinois' third most populous county. The Housing Lake coalition is working to increase the supply of affordable housing through actionable, municipality-specific solutions. The initiative includes a housing task force comprised of municipalities across the county, which evaluated tools and resources to address housing challenges, culminating in a step-by-step Housing Ready toolkit. In 2026, the coalition will host a housing summit to generate momentum and build deeper community support.



Left to right: CMAP planning experts Erin Ludwig, Makala Morales, Gabriel Guevara, Mike Brown, Lee Skuby, Jourdan Nash, and Enrique Castillo.



# PEOPLE AND CULTURE

**C**MAP is committed to championing our exceptional team members and cultivating our agency culture. Our strategy includes initiatives steered by the People and Culture Council, an advisory group of individuals from all levels and divisions of the agency. They work to develop and support retention; improve satisfaction; encourage team building; promote collaboration; break down silos; and provide a welcoming and inclusive work environment.

Another group that supports our agency culture is WelMap, a committee of CMAPers who coordinate social events and team-building activities. They host lunch and learn events, which feature a mix of internal subject matter experts and agency partners who keep employees informed and engaged with topics close to their work. This year's sessions included: findings from CMAP's municipal survey, how to leverage our agency's robust data assets, and a discussion of the Chicago Hub Improvement Project, among other topics.

## Celebrating our shining stars

**A**t times, the good work of government can go unnoticed. There are those who provide essential data, solve policy puzzles, ensure that public funds are managed efficiently, keep the public informed, and support communities in bringing their dreams to reality.

This work is often invisible to the public. Each year, CMAP highlights and recognizes our shining stars with the Public Service Awards. We honor individuals and teams in four awards categories — Difference Maker, Good Government, Core Values, and ON TO 2050 Advancement.

## High Impact Teams

One of our priorities in 2025 was to effectively allocate our people and financial resources by leveraging our collective expertise, enhancing processes, and creating outcome-oriented teams.

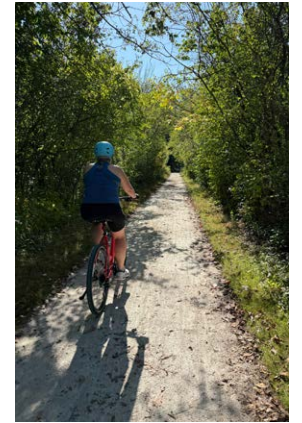
Our goal was to strengthen the efficiency, effectiveness, and collaboration of diverse teams to work seamlessly together to address and advance our strategic goals. As part of this effort, we introduced professional project management tools, led workshops, and selected change management coaches to facilitate cross-divisional learning.





## Exploring our communities with the Regional Tourism Challenge

Our annual Regional Tourism Challenge invites CMAPers to visit attractions across northeastern Illinois, including local businesses, nature, museums, historical sites, and more. The challenge gives our team members the chance to explore our region, deepen their understanding of the communities we serve, and witness transportation challenges and opportunities.



## Celebrating and appreciating our awesome team

Near the end of each calendar year, we recognize our team members with a celebratory lunch and a special gift as a token of our appreciation. It's an opportunity to formally recognize the outstanding work, dedication, and time that every individual puts in to collectively influence and improve the region.





### CMAP Board

**Gerald Bennett**, Chair  
Mayor, City of Palos Hills  
*Represents Southwest Cook County*

**Carolyn Schofield**, Vice chair  
Board Member, McHenry County  
Mental Health Board  
*Represents McHenry County*

**Anne Sheahan**, Vice chair  
Vice President, HNTB  
*Represents City of Chicago*

**Frank Beal**  
Senior Executive, Civic Consulting Alliance  
*Represents City of Chicago*

**Matthew Brolley**  
President, Village of Montgomery  
*Represents Kane/Kendall counties*

**Jada Curry**  
Mayor, Village of Lynwood  
*Represents Suburban Cook County*

**Gary Grasso**  
Mayor, Village of Burr Ridge  
*Represents DuPage County*

**Paul Hoefert**  
Mayor, Village of Mount Prospect  
*Represents Northwest Cook County*

**Nina Idemudia**  
CEO, Center for Neighborhood Technology  
*Represents City of Chicago*

**Abolfazl “Kouros” Mohammadian**  
Non-voting Member  
Professor/Department Head, University of Illinois Chicago  
*Represents Illinois Governor’s Office*

**John Noak**  
Mayor, Village of Romeoville  
*Represents Will County*

**Leanne Redden**, Non-voting member  
Executive Director, Regional Transportation Authority  
*Represents MPO Policy Committee*

**Richard Reinbold**  
President, Village of Richton Park  
*Represents South Cook County*

**Nancy Rotering**  
Mayor, City of Highland Park  
*Represents Lake County*

**Joanna Ruiz**  
Vice President, Wallin/Gomez Architects, LTD  
*Represents City of Chicago*

**Matthew Walsh**  
Attorney, Hinshaw & Culberston LLP  
*Represents West Cook County*

**Jung Yoon**  
Chief of Policy, City of Chicago, Mayor’s Office  
*Represents City of Chicago*



To our dedicated CMAP Board and MPO Policy Committee members, who bring their voices and diverse expertise to advance change in the region.

### MPO Policy Committee

**Gia Biagi**, Chair  
Secretary, Illinois Department of Transportation  
*Represents Illinois Department of Transportation*

**Cassandra Rouse**, Vice chair  
Executive Director, Illinois State Toll Highway Authority  
*Represents Illinois State Toll Highway Authority*

**Frank Beal**  
Senior Executive, Civic Consulting Alliance  
*Represents Chicago Metropolitan Agency for Planning*

**Jennifer Bertino-Tarrant**  
Executive, Will County  
*Represents Will County*

**Matthew Brolley**  
President, Village of Montgomery  
*Represents Chicago Metropolitan Agency for Planning*

**Kelley Brookins**, Non-voting member  
Regional Administrator for Region V, Federal Transit Administration  
*Represents Federal Transit Administration*

**Mike Buehler**  
Chairman, McHenry County Board  
*Represents McHenry County*

**Deborah Conroy**  
Chair, DuPage County Board  
*Represents DuPage County*

**Jim Derwinski**  
CEO/Executive Director, Metra  
*Represents Metra*

**Thomas Evenson**, Non-voting member  
Senior Director of Public Affairs, Union Pacific Railroad  
*Represents Class One Railroads*

**Scott Gengler**  
Vice chair, Kendall County Board  
*Represents Kendall County*

**Sandy Hart**  
Chair, Lake County Board  
*Represents Lake County*

**Jennifer “Sis” Killen**  
Superintendent, Cook County Department of Transportation and Highways  
*Represents Cook County*

**Richard Kwasneski**  
Chair, Pace Board of Directors  
*Represents Pace*

**Nora Leerhsen**  
Acting President, Chicago Transit Authority  
*Represents Chicago Transit Authority*

**Corinne Pierog**  
Chair, Kane County Board  
*Represents Kane County*

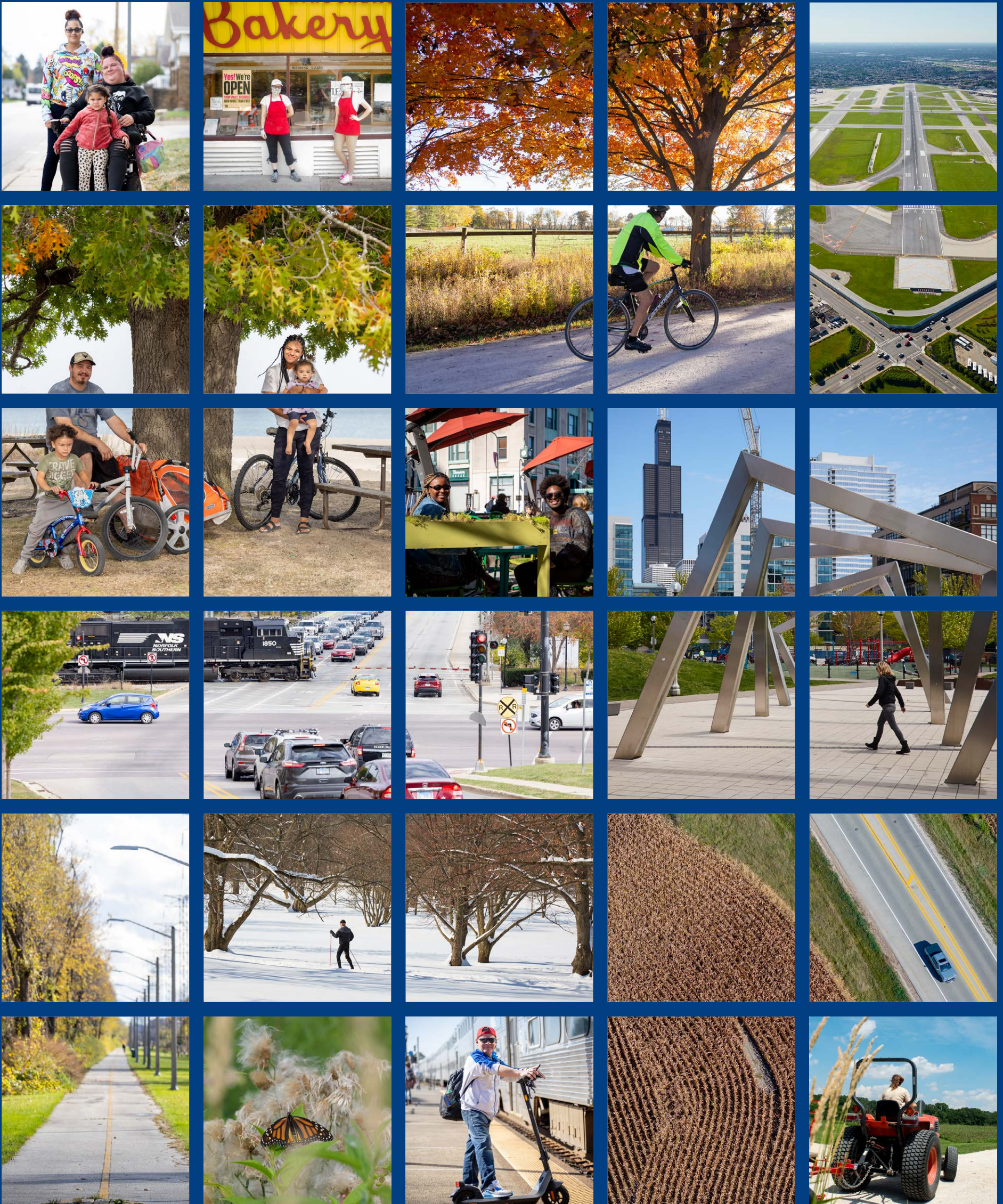
**Leanne Redden**  
Executive Director, Regional Transportation Authority  
*Represents Regional Transportation Authority*

**Jeffery Schielke**  
Mayor, City of Batavia  
*Represents Council of Mayors*

**Vershun Tolliver**, Non-voting member  
Division Administrator, Federal Highway Administration  
*Represents Federal Highway Administration*

**Craig Turner**  
Acting Commissioner, Chicago Department of Transportation  
*Represents Chicago Department of Transportation*





Chicago Metropolitan  
Agency for Planning

433 West Van Buren Street  
Suite 450  
Chicago, IL 60607  
[cmap.illinois.gov](http://cmap.illinois.gov)  
312-454-0400