

# Surface Transportation Program (STP) Shared Fund Call for Projects

## Federal Fiscal Year (FFY) 2026-2030 Call for Projects

The [Surface Transportation Program](#) (STP) is a federally funded program which supports highways and bridges, transit capital improvements and projects, as well as bike and pedestrian projects. The STP Shared Fund is programmed by the STP Project Selection [Committee](#) and administered by Chicago Metropolitan Agency for Planning (CMAP) staff.

The STP Shared Fund supports a multimodal transportation system, promotes efficiency, ensures accessibility, and strengthens sustainability, while supporting [ON TO 2050](#) goals.

### Call for Projects (CFP) Timeline



### Eligible project types

- Bicycle and pedestrian barrier elimination
- Bridge rehabilitation and reconstruction
- Bus speed improvements
- Corridor-level or small area safety improvements
- Highway/rail grade crossing improvements
- Roadway reconstructions and expansions
- Transit station, yard, or terminal improvements
- Truck route improvements

### Eligibility requirements

Projects must be included in a locally-adopted plan.

Total project cost must be at least \$5 million or the project must be a partnership of 3 or more eligible sponsors.

Eligible sponsors include any state agency or unit of government that can levy taxes (e.g., municipality, county, township, park district, forest preserve district, or transit agency)

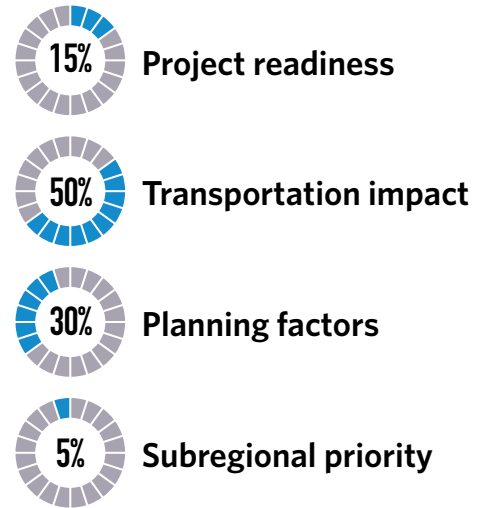
All awarded STP funding requires a 20 percent local\* match.\*\*

Phase I engineering is ineligible for funding, exceptions.\*\*

\*Motor fuel tax, Rebuild Illinois bond funds, state and private funds can be used for local match.

\*\*Local match and preliminary engineering eligibility requirements could be waived for [Cohort 4 communities](#).

### Project scoring criteria



Individual scoring criteria are based on the project type. See the STP Shared Fund application workbook on the call for projects webpage for details.

For more information, visit the [Call for Projects webpage](#): [cmap.is/2024callforprojects](http://cmap.is/2024callforprojects).

Please contact your [Planning Liaison](#) for project-specific questions or [transportation@cmap.illinois.gov](mailto:transportation@cmap.illinois.gov) for general inquiries.