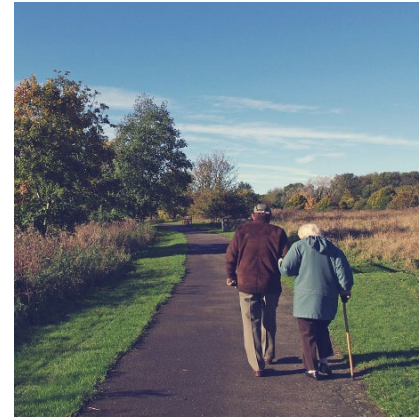
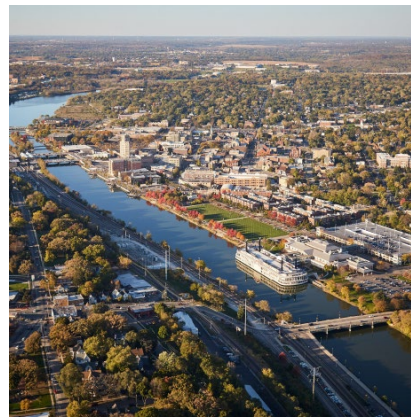
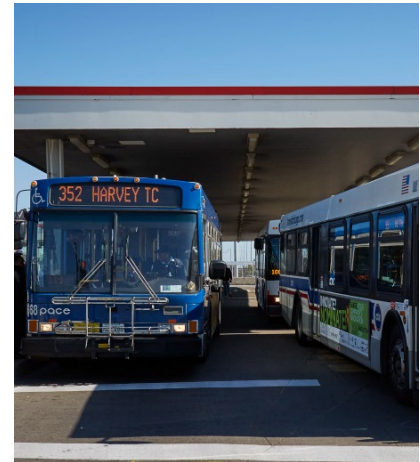


Regional ADA Coordinators Group

March 18, 2025





Chicago Metropolitan
Agency for Planning

Access check



Access check

Visibility

- Enable closed captioning
- Let us know if you need more time with a difficult slide!

Acoustics

- Use mics (for in-person attendees)
- Mute when not speaking
- Let us know if we are speaking too quietly, too quickly, etc.

Access check

Participation

- Use the chat or raise hand function
- Introduce yourself and your affiliation every time you speak
- Direct message Kaitlin Cernak (CMAP) if you want to ask a question anonymously

Other

- Restrooms located near the elevator bays

Meeting agreement

- This is a safe space to share and learn.
- CMAP is not an enforcement agency or reporting agency; we're here to provide support.
- Conversation is strongly encouraged!
Please ask questions, share experiences, drop comments, etc.
- Meetings will not be recorded but we will share slides and resource links.



Chicago Metropolitan
Agency for Planning

Agenda and introductions



Agenda

1. Introductions
2. Awareness
3. Approach
4. Discussion: Village voice
5. 5-minute break
6. Panel: CMAP technical assistance
7. Open forum
8. Meeting close

If this is your first time attending, please take this quick survey!



Meet CMAP's Accessible Communities team



Jaemi Jackson
Planning Principal,
Accessibility Program Manager



Jeffrey Nolish
Senior ADA Planner



Caroline Caruso
Planning Intern



Sema Abulhab
Senior Engagement
Specialist



Kaitlin Cernak
Senior Communications
Specialist

CMAP's Accessible Communities program

- Completed **16 training workshops**, **460+ attendees** from **140 organizations** including **86 municipalities**
- Technical assistance for public right-of-way ADA self-evaluations and transition plans
- [Templates and guidance for ADA public notice, ADA coordinator designation, grievance procedure](#)
- Newsletter – sign up at **cmap.illinois.gov**



cmap.is/accessibility

Regional ADA Coordinators Group

- Provide ADA coordinators with practical, actionable knowledge and resources
- Space for ADA coordinators to connect with each other to share lessons learned as well as challenges and opportunities
- Meet 12 times over 2 years (today is meeting three)

Call for Projects

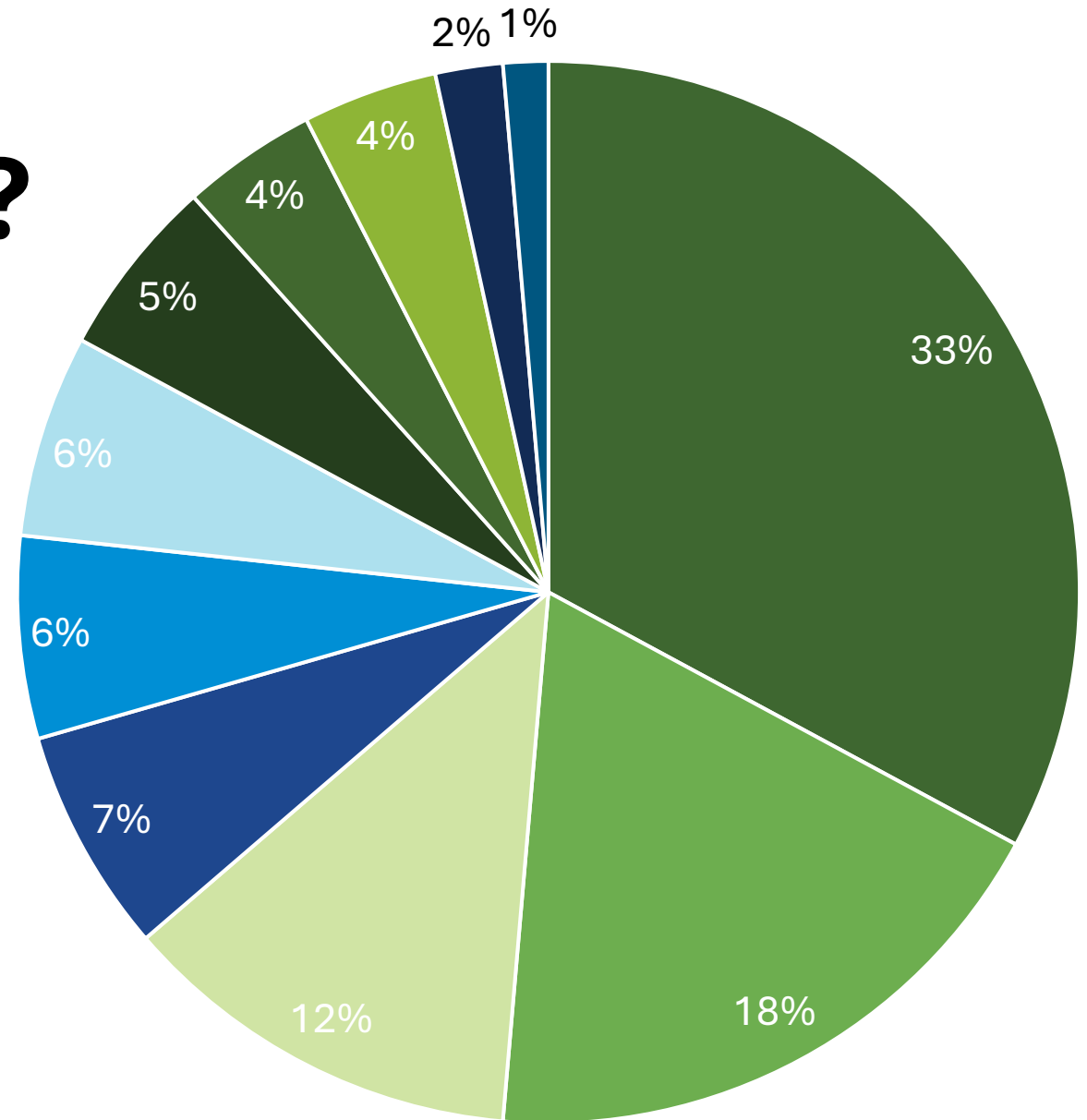
- CMAP + RTA annual call for technical assistance is now open!
- MANY project categories including *ADA self-evaluation and transition plans*
- Apply by **Friday, April 4, at noon**



cmap.is/callforprojects

What roles do ADA coordinators have?

- Administration and Management
- ADA Coordinator only
- Human Resources
- Development
- Public Works
- Buildings and Facilities
- Clerk
- Engineering
- Other
- Finance
- Fire or Police



Next meeting

May 13: self-evaluation and transition plan (part 2)

- Sample/example plans!
- Presentations from experts, communities, and consultants!
- Addressing remaining and technical questions!



Chicago Metropolitan
Agency for Planning

Awareness

What are ADA self-evaluations and
ADA transition plans?



ADA Title II obligations:

All public entities must:

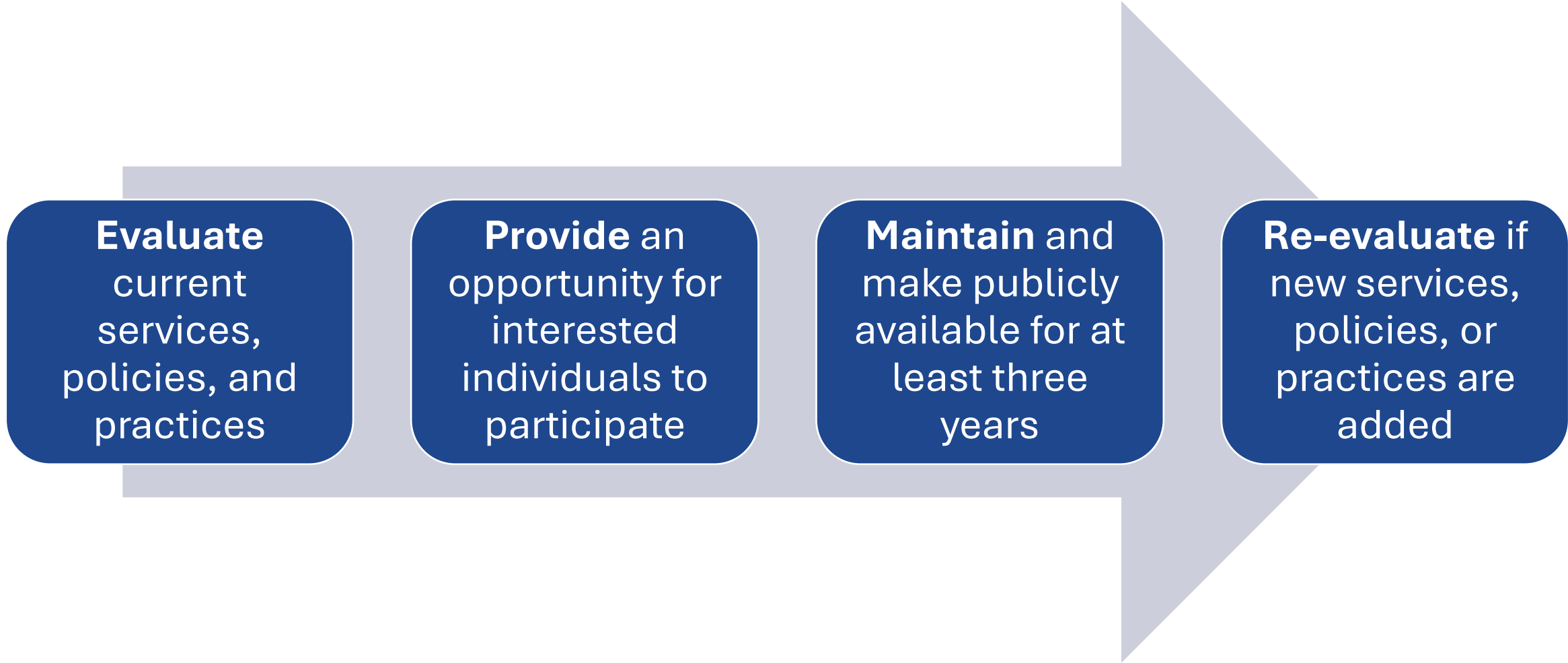
- Provide public notice about the ADA
- **Conduct an ADA self-evaluation**

Public entities with 50 or more employees are also required to:

- Designate an employee to oversee Title II compliance (ADA coordinator)
- Establish a grievance procedure
- **Develop a transition plan based on self-evaluation**



What is an ADA self-evaluation?



ADA self-evaluation requirements

- i. A public entity, of any size, shall **evaluate** its current services, policies, and practices. If they don't meet Title II requirements, the public entity shall make the necessary modifications.

- ii. A public entity shall **provide an opportunity for participation** to interested individuals, including people with disabilities or organizations representing people with disabilities.

ADA self-evaluation requirements

- iii. A public entity that employs 50 or more people shall, for at least three years following completion of the self-evaluation, **maintain on file and make available for public inspection:**
 - 1) A list of interested individuals consulted
 - 2) A description of areas examined
 - 3) A description of any modifications made

ADA self-evaluation requirements

- iv. If a public entity has already completed a self-evaluation requirement, then the requirements of this section shall only apply to those policies and practices not included.



What is an ADA transition plan?

Describe
obstacles to
accessibility and
methods for
improvement

Provide an
opportunity to
submit
comments and
participate

Schedule
necessary
improvements to
the public right-
of-way

Re-evaluate if
new services,
policies, or
practices are
added



ADA transition plan requirements

- i. If structural changes are needed to achieve program accessibility, public entities must develop a transition plan. The entity shall **provide the following**:
 - 1) An opportunity for the public to submit comments
 - 2) A publicly available copy of the transition plan
- ii. If responsible for streets, roads, and/or walkways, a transition plan shall **include a schedule** for providing curb ramps/slopes, prioritizing walkways serving public entities such as government facilities, transportation, etc.



ADA transition plan requirements

iii. The plan shall at a minimum:

1) **Identify** physical obstacles that limit program/facility accessibility

2) **Describe** methods used to make facilities accessible

3) Indicate the **official responsible for implementation of the plan**

iv. If a public entity has already completed a transition plan, these requirements only apply to new policies and practices not included previously



These plans are living documents!

Both are living documents that should be updated over time.

A robust, comprehensive plan with clearly identified barriers and timelines will be easy to modify!

Do the hard work now and make your life easier later!



Chicago Metropolitan
Agency for Planning

Approach

Setting your municipality
up for success





Approach guidance:

1. **WHO** will be responsible for work
2. **WHAT** is your current state of administrative compliance
3. **YOU** and your role within the plan

1. WHO?

Discussion: Does your community have a self-evaluation and/or transition plan? Who led your approach?

- Staff-led?
- Consultant-led?
- Hybrid?

Consultant-led

This approach will likely require that municipal staff draft a scope of work, issue a request for proposals, and hire a consulting firm tasked with the delivery of the self-evaluation and/or transition plan in coordination with one or more municipal staff members.

Staff-led

This approach will likely require that municipal staff draft a scope of work, coordinate across departments (public works, engineering, human resources, etc.) to deliver the self-evaluation and/or transition plan, fulfilling all requirements inclusive of community infrastructure inventory, public engagement, and participation.

Hybrid approach

This approach combines elements of staff-led and consultant-led approaches. For example, a municipality may hire a consultant to take inventory of the sidewalks, identify barriers, and set a schedule to achieve compliance but choose to coordinate public engagement and participation in-house.

CMAP technical assistance

More on this approach later!



2. WHAT?

i. Administrative requirements

ii. Inventory

iii. Standards and guidelines



Administrative requirements

- Designate an ADA Coordinator
- Provide public notice of the ADA
- Post ADA grievance procedure



cmap.is/accessibility



Inventory

Know your...

- Services
- Policies
- Practices
- Public infrastructure
- Facilities



Standards and guidelines!

- **2023 PROWAG:**
The most comprehensive set of guidelines for public-right-of-way; adopted as **IDOT legal standards**
- **2010 ADA Design Standards:** Legal requirements for buildings, facilities, and barrier removal

More standards and guidelines!

- **IDOT ADA Design Standards:** Legally required standards for the public right-of-way
- **2018 Illinois Accessibility Code:** Legally required standards that supplement federal standards, including unique cases



3. YOU!

Responsibility:

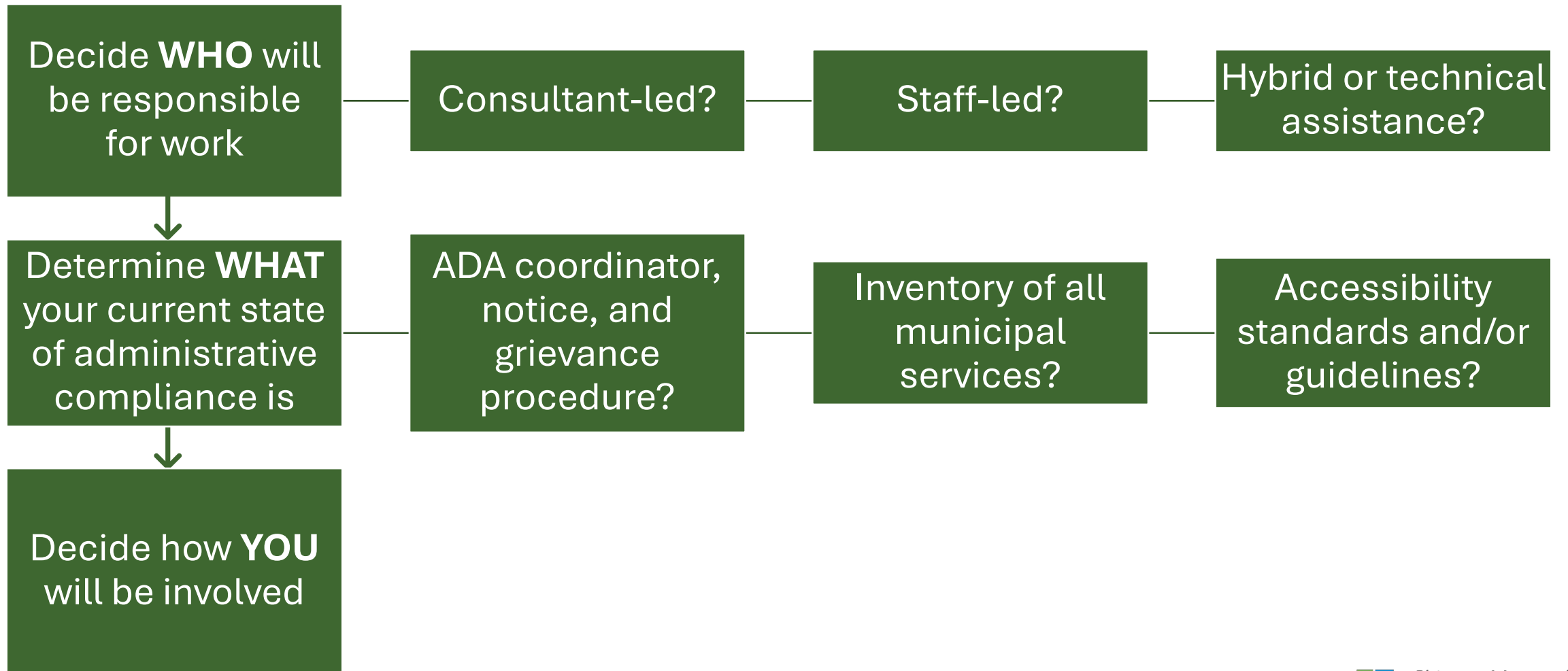
In the case of non-compliance, ADA coordinators are the responsible individuals. They must be kept in the loop!

Potential:

Self-evaluation and transition plans are better with you in the mix. ADA coordinators can play a key role as a connector!



Approach flowchart





5-minute Break

If this is your first time attending, please take this quick survey!





Chicago Metropolitan
Agency for Planning

Discussion: Village voice

Share with your peers
about your approach and
process.



Administration and coordination

- 1. Who drafted the scope?**
How did you decide what you wanted in the scope?
- 2. Where did your funding come from?** Did you use planning \$? Public works \$? Another funding source?
- 3. How long did the plan take, from start to finish?** Did you encounter any roadblocks that extended your timeline? How did you overcome those barriers?
- 4. Which staff members were involved?** What departments were involved?



Public works and facilities

1. **How do you measure and manage the accessibility** of your public infrastructure and facilities?
2. **Have you considered integrating your maintenance schedule** or programming into transition planning?
3. **What tools, data, and programs** do public works and/or engineering use that are helpful to transition planning?
4. **What else** should we be asking?

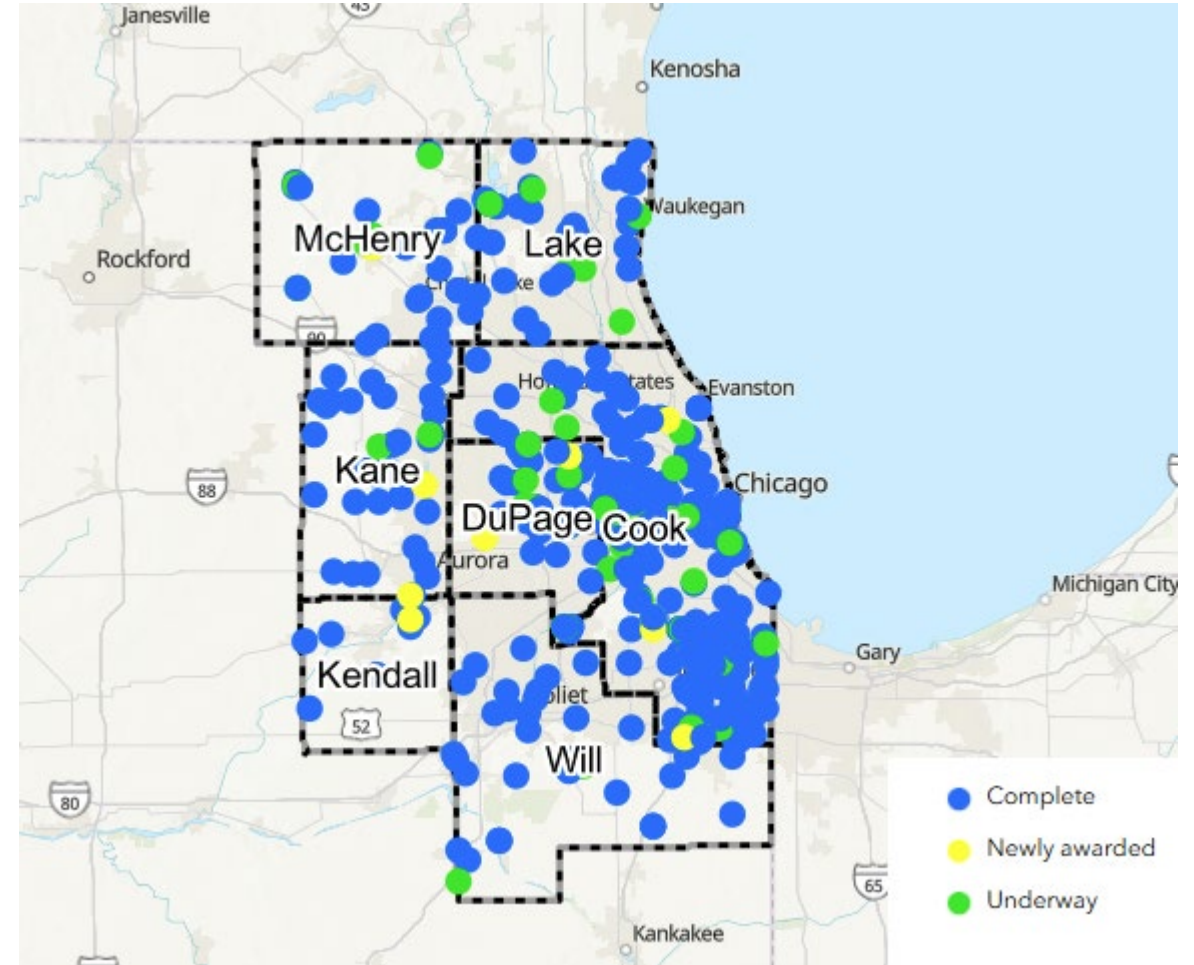
Panel: CMAP technical assistance

Overview and Q&A



What is CMAP technical assistance?

- CMAP partnership with RTA supporting over 300 local projects to build capacity, engage communities, make critical decisions, and connect local partners to funding and resources.
- Assistance is awarded annually through the CMAP call for projects in spring.





CMAP technical assistance panel:

1. In what ways are ADA coordinators involved in your current self-evaluation and transition planning projects?
2. When technical assistance starts, are there any processes, policies, and/or procedures that have contributed to successful project coordination?
3. What are some characteristics of successful partnerships with CMAP?



Chicago Metropolitan
Agency for Planning

Open forum



What is the open forum?

A new component at the end of our meetings where we open the floor to your questions, comments, and issues.

10(ish) minutes starts now!

Last call

May 13: What else should we cover about self-evaluation and transition planning?

Email jnolish@cmap.illinois.gov with feedback!

Quarter checkpoint

1. What's working?
2. What needs to change?
3. How else can we improve accessibility?



Stay informed!



cmap.is/ADAnewsletter

Sign up for CMAP's Accessible Communities newsletter



Upcoming Regional ADA Coordinators Group meetings

- May 13
- July 8



Chicago Metropolitan
Agency for Planning

Thank you!

@cmapillinois |    