

# Will Council

## Summary of 2025-2029 Local Surface Transportation Program (STP-L) funding

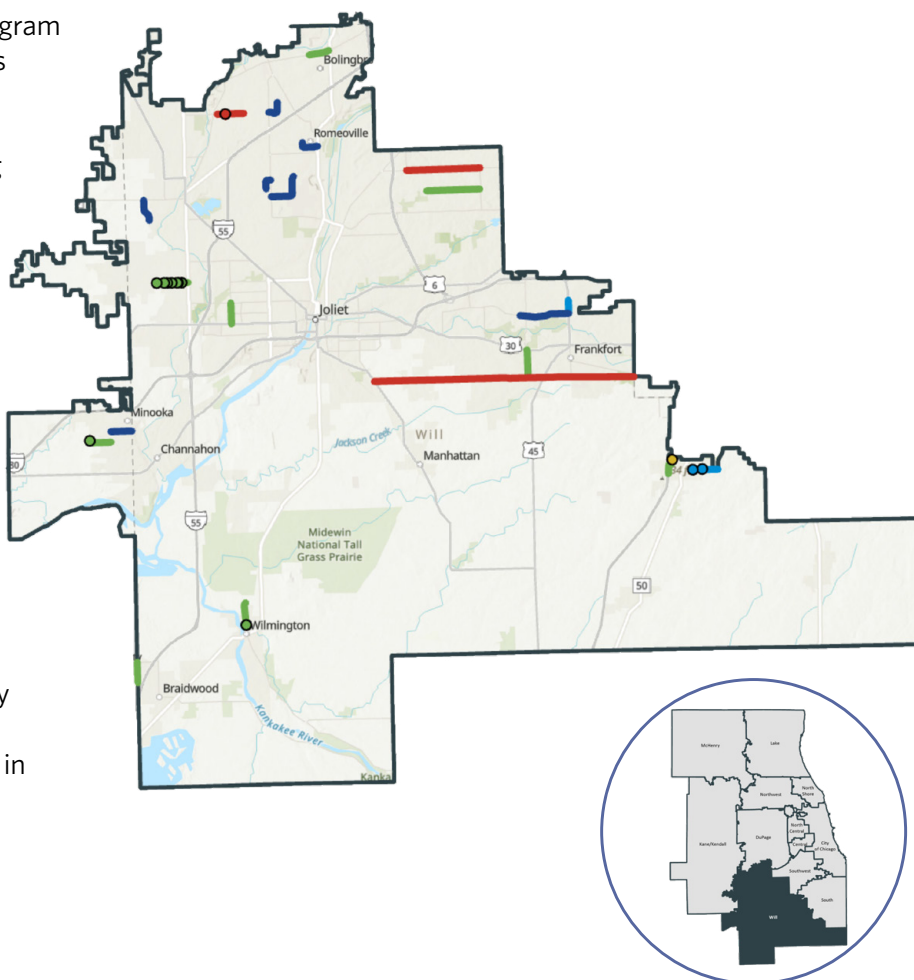
### Program highlights

The Federal Fiscal Year (FFY) 2025-2029 Will Council STP-L program was approved on June 5, 2024, by the Will Council Transportation Technical Committee. The program includes 24 projects investing nearly \$54 million across the 5 program years. Of the 24 projects, 15 are new projects selected in this call for projects.

There are 21 projects awarded STP-L funding for construction phases in the program, which represents 96 percent of the total STP-L funding. In addition, six projects in the program are using STP-L funding for design engineering phases.

This summary provides information on program development, including the funding Will Council receives and how projects are selected. It outlines the entire STP-L program for the Will Council, including the currently programmed projects and newly awarded projects, and insight on policies Will Council uses to manage its STP-L funds. Lastly, this summary provides guidance to prepare future projects for the next STP-L call for projects, expected in the fall of 2025.

**Figure 1:** Locations of Will Council's 24 STP-L funded projects for FFY 2025-2029



### 2025-2029 call for projects summary



**17** communities applied

**12** communities selected



**\$82,746,217**  
funds requested



**23** applications submitted

**15** applications selected



**\$25,002,408**  
funds programmed

### Legend

- Maintenance
- Modernization
- Intersection
- Bridge
- Expansion
- Bike/pedestrian/safety

# Program development

The Chicago Metropolitan Agency for Planning (CMAP) receives a suballocation of Surface Transportation Block Grant funding each year for use within northeastern Illinois. A substantial portion of this funding is distributed to the 11 subregional councils of mayors and the City of Chicago based on an agreed upon performance-based formula. Will Council's share of the total funding is typically around \$10.5 million annually. To maximize the impact of this funding, Will Council developed a project evaluation methodology made up of seven criteria worth a total of 100 points.

Will Council received 23 eligible project applications during its call for projects with a total funding request of \$82.7 million. Will Council evaluated and scored each project using its methodology.

Funding priority is given in the order of project scores, with the highest scored projects receiving first priority to receive funding that aligned with their requested schedule and amounts. Once all available funding was programmed, remaining unfunded projects were considered for the contingency list. Projects on the contingency list are not guaranteed funding, but if additional funding becomes available and the project is ready to be implemented before the next call for projects, it can be considered for funding.

## STP-L funding budget

FFY	Funding budget	Unprogrammed funds
2025	\$10,773,084	\$29,911
2026	\$10,529,322	\$81,938
2027	\$10,697,791	\$20,116
2028	\$10,868,955	\$184,008
2029	\$11,042,859	\$54,385

## Call for projects policies



### Funding maximums

Two-thirds of total STP allotment on all project phases



### Eligible phases & local match requirements

Engineering 2 (80%/20%), construction (80%/20%)



### Approving bodies

Will County Governmental League, Transportation Committee  
 CMAP Transportation Committee  
 CMAP MPO Policy Committee

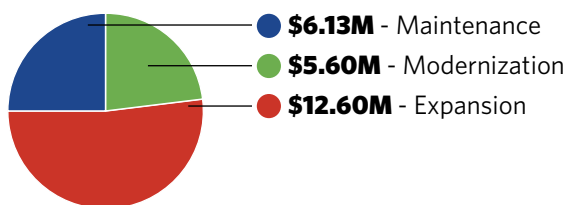
## Methodology criteria

Methodology criteria for roadways and intersection projects.

<b>Planning factors</b> 25 points	<b>Project readiness</b> 25 points	<b>Safety</b> 15 points	<b>Traffic volumes</b> 15 points	<b>Participation</b> 10 points	<b>Local need</b> 5 points	<b>Pavement condition</b> 5 points
--------------------------------------	---------------------------------------	----------------------------	-------------------------------------	-----------------------------------	-------------------------------	---------------------------------------

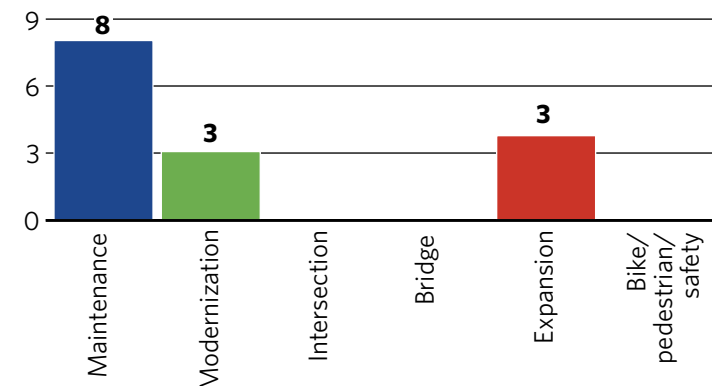
For more detailed information on policies and methodology, visit the [Will Council](#) webpage.

**Figure 2:** STP-L funding distributed by project type



Will Council awarded funding to 15 new projects that total \$25 million in FFY 2025-2029. Of the 15 projects, 4 of them were for expansions, which represents about 50 percent of the total funding awarded in this call for projects period.

**Figure 3:** Number of projects selected by type



# Overall program

## Current program including new projects

Newly awarded projects from the FFY 2025-2029 call for projects were added to the existing Will Council program of projects. Projects that already exist in the program were selected in a prior call for projects and no new projects will be added until the next call for projects in fall 2025.

With the newly selected projects added to the existing program, the current Will Council STP-L program comprises 24 projects totaling nearly \$54 million. The modernization project type has the highest share of funding at about \$27.5 million across ten projects. The STP-L program also advances accessibility and active transportation goals.

## Projects that include improvements to accessibility and active transportation



**7** accessibility improvement projects



**7** projects implementing new shared use paths

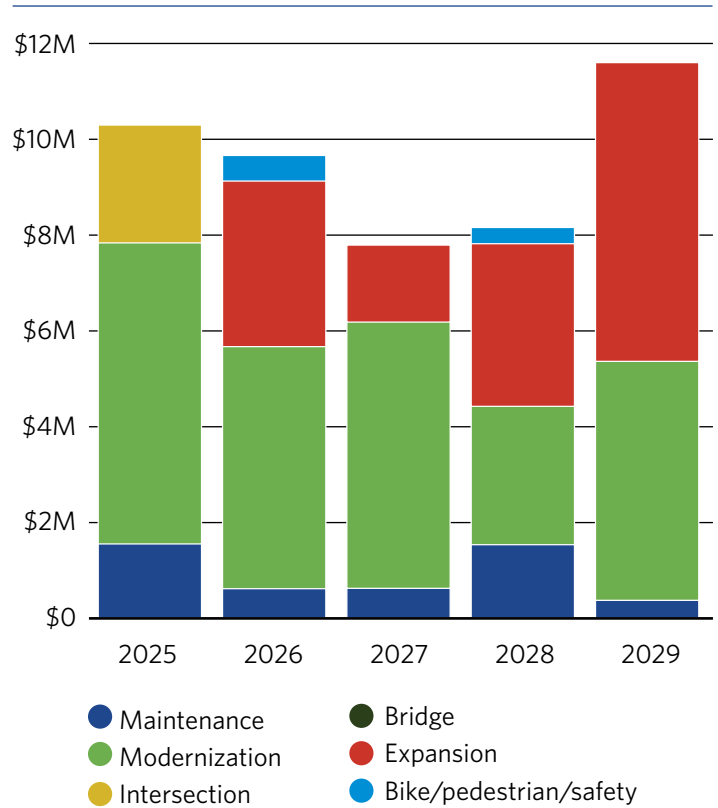


**8** pedestrian facility improvement projects

## Program policies after funding award

This STP-L program will evolve as implementation timelines become clearer. Projects often get delayed and can't use the funding allocated in the awarded year or may need additional funding to get the project built. To ensure Will Council is using its funding effectively, the council has active program management policies. This includes putting caps on how much of a cost increase a project can request. Will Council also requires quarterly status updates for each planned project to aid in making informed programming decisions to ensure 100 percent of the council's allotment is spent each year.

**Figure 4:** 2025-2029 FFY STP-L funds programmed by project type



## Key active program management policies



### Cost increase policies

Projects are eligible for cost increases up to the maximum council funding cap of two-thirds the STP-L allotment on a single phase.



### Quarterly status updates

Required March, June, September, and December until the project is financially closed out.



### Obligation extensions

Each project must fully obligate funds in the year they are programmed in prior to the end of that FFY. Projects can submit an obligation deadline extension request to be granted an additional six months to obligate the funds.



### Approving body

Will County Governmental League, Transportation Committee

## Future call for projects

The next call for projects opportunity is scheduled to open in October 2025. Communities with candidate STP-L projects should have the following ready to best position themselves for funding consideration:



### Preliminary engineering

Funding is only available for Engineering 2, Construction, and Construction Engineering.



### Local match

Projects will be required to show that the local match needed for the project has been committed by the community.



### Partner engagement

Coordinate with others that have a stake in the project. For example, if a Pace bus route is within the project area or a neighboring municipality will be impacted, those entities should be engaged with.



### Cost estimate

The STP-L application requires a detailed project cost estimate.

If you have questions about whether your project is a good fit for Will Council STP-L funding, contact your council staff. Additionally, sponsors of current and potential projects are encouraged to actively participate in their council's committees. More information about council activities and resources for project sponsors and applicants can be found by visiting the web pages in the resources section below.

[Sign up](#) to receive CMAP's transportation newsletter, which includes timely updates about funding opportunities and other transportation information from across the region.

## CMAP resources



### STP information

Additional resources regarding the [STP funding program and policies](#) are available.



### Programmer resources

Information regarding programming [procedures, schedules, and contacts](#) are available.

## Council contacts

### Chair

Mayor Teresa Kernc

### Executive Director

Hugh O'Hara, [hugh.ohara@wcgl.org](mailto:hugh.ohara@wcgl.org)

### Planning Liaison

Jada Porter, [jada.porter@wcgl.org](mailto:jada.porter@wcgl.org)

**General phone number:** 815-254-7700



### Council meeting dates

Agenda packets are released one week in advance. More details can be found on Will County's website.

### Link to council meetings:

[www.wcgl.org/meeting-materials.html](http://www.wcgl.org/meeting-materials.html)

## Council membership

Beecher  
Bolingbrook  
Braceville  
Braidwood  
Channahon  
Coal City  
Crest Hill  
Diamond  
Elwood  
Frankfort  
Godley  
Homer Glen  
Joliet  
Lockport

Manhattan  
Minooka  
Mokena  
Monee  
New Lenox  
Peotone  
Plainfield  
Rockdale  
Romeoville  
Shorewood  
Symerton  
Wilmington



Chicago Metropolitan  
Agency for Planning