

eTIP Help

Contents

Introduction	2
Navigating eTIP	2
Approved TIP.....	3
ID	3
County.....	3
Lead Agency	3
Title	4
Project Type	4
Funding	4
Total Cost and Percentages	4
Amendments.....	4
Advanced Search	6
Project ID.....	6
Title or Description	6
Location/County.....	7
Municipality	7
Lead Agency	7
Project Type	8
Federal Funding	8
Projects by County.....	8
Interactive Map.....	9
Project Details	10
Project Overview.....	10
Funding History	12
Amendment History.....	13

Introduction

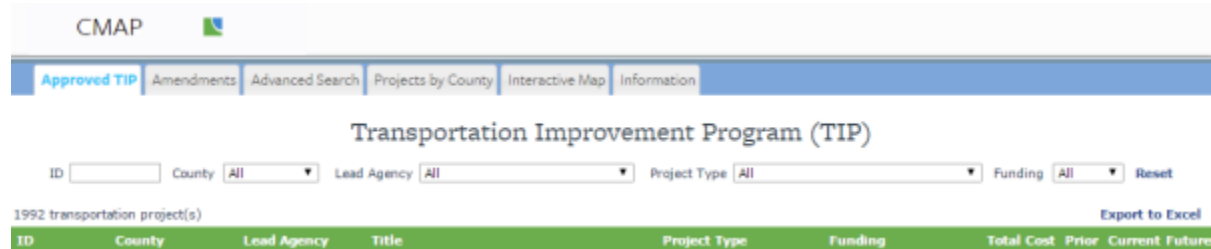
The online eTIP database is the official record of federal transportation funding and regionally significant state or locally funded projects. The database is a tool for programmers to submit new projects and project changes for consideration by the CMAP Transportation Committee and MPO Policy Committee. The Federal Highway Administration uses the eTIP database to ensure that projects submitted for federal participation are deemed a priority for the region. The database can also be used by the public to view upcoming transportation projects in their community and the region.

The eTIP public site (etip.cmap.illinois.gov) displays the most recently approved program of projects. Visitors to the site can search, filter, and sort the Approved TIP projects, view project details, including a history of project amendments, select and view projects by county, and locate projects on an interactive map.

The sections in this document describe individual pages of the eTIP website. You also can watch a [video training](#).

Navigating eTIP

eTIP has six distinct parts: the Approved TIP, Amendments, Advanced Search, Projects By County, an Interactive Map, and detailed project information. The eTIP home page is the Approved TIP tab.



- The [Approved TIP tab](#) is a list of projects, sorted by TIP ID, that make up the currently approved TIP, including administrative changes that have been accepted by CMAP staff.
- The [Amendments tab](#) displays an overview of actions taken or in progress to modify the scope, schedule, financial, or other project information.
- The [Advanced Search tab](#) provides visitors a means to locate project information by title, description, location, lead agency, project type, or specific federal fund source.
- The [Projects by County tab](#) provides a summary of the number, type, cost, and available funding for projects within selected counties.

- The [Interactive Map](#) allows visitors to search by a specific address or zoom in to an area to view programmed projects.

Detailed project information can be obtained by selecting a specific project on any of these tabs. Project lists on every tab can be sorted by clicking on the column title, and project lists can be exported to Microsoft Excel.

Approved TIP

The Transportation Improvement Program (TIP) is a five-year program of surface transportation projects throughout northeastern Illinois. Based on federal fiscal years which start on October first, the TIP includes projects expected to receive federal funding. The TIP also includes regionally significant projects funded by state and local sources. The Approved TIP tab is a list of projects, sorted by TIP ID, that make up the currently approved TIP, including administrative changes that have been accepted by CMAP staff.

The approved TIP may also include projects that are illustrative, which are included in the multi-year B-list (MYB). These projects are planned to be completed when funding becomes available. Most major capital projects fall into this category. These projects are labeled as "FUTURE PROJECT" in the Approve TIP. Projects with funds both in prior and future years, but no funds in the current TIP years are also included as future projects.

Projects with funding in past years may also be included in the Approved TIP listing if they are in progress and could still have cost changes. Projects that are not expected to experience any cost changes are designated as "COMPLETED".

The Approved TIP listing contains the following fields:

ID

The TIP ID is the unique identification number for the project within the TIP database. The ID is based on the Lead Agency and location of the project, plus the year in which the project was first included in the TIP database.

County

"County" is the county in which the project is wholly or partially located. Projects that benefit the entire region, or are not location-based are considered to be "Regionwide" projects. A quick search of projects by county can be completed at any time using the County drop down list at the top of the page.

Lead Agency

The lead agency is the organization responsible for programming and managing project funding in the CMAP TIP. The lead agency may differ from the agency responsible for implementing the

project. For example, projects using state and federal funds that are implemented by municipalities are typically programmed and managed in the CMAP TIP by one of the eleven subregional Councils of Mayors. A quick search of projects by lead agency can be completed at any time using the Lead Agency drop down list.

Title

Project titles typically include the location of projects and may also describe the type of work being done. If a project does not yet have any funding programmed in the TIP, the title indicates that it is a "Future Project". The title also indicates when projects are "Completed".

Project Type

A project's type helps to classify the major purpose of the project, and is helpful when analyzing performance goals included in ON TO 2050. A quick search of projects by type can be completed at any time using the Project Type drop down list.

Funding

A quick search of projects by funding can be completed at any time using the Funding drop down list.

Federal	Indicates that federal funds are being used for the project. Federally funded projects typically also include state, local, and/or other funds.
State	Indicates that state funds are being used for the project. No federal funds are included. Local and/or other funds may be included.
Local	Indicates local funds are being used for the project. No federal or state funds are included.
Other	Indicates that funds other than federal, state, or local are being used for the project.

Total Cost and Percentages

Total Cost includes the cost for all phases of a project, regardless of the source, timing, or availability of funds. The percentages following the Total Cost reflect the portion of the project's total cost programmed in years prior to the current TIP years (prior), the percentage of that cost currently programmed (current), and the percentage of that cost which is not yet available for programming in the TIP (future).

Amendments

TIP amendments are significant changes to the scope, schedule or limits of a project or significant financial changes.

There are three types of amendments:

1. Administrative (Admin) amendments are minor changes that are accepted by CMAP staff.
2. Formal Amendments are more significant scope, schedule, or financial changes which require seven days public comment and approval by the Transportation Committee.
3. Formal Conformity Amendments are significant changes to scope or schedule for capacity related projects that may affect the region's ability to meet air quality standards. Conformity amendments require 30 days public comment and approval by the CMAP Board and MPO Policy Committee.

Amendments to CMAP's TIP must be approved by the state of Illinois for incorporation into the State Transportation Improvement Program (STIP). The TIP and STIP changes must be approved by FHWA and FTA, certifying that all federal transportation planning requirements were met. The formal amendment which occurs at the start of each federal fiscal year (FFY) is referred to as an Adoption. The annual adoption removes the just-completed FFY from the TIP, brings the illustrative year into the TIP, and adds a new illustrative year.

		Amendment	Notes	CMAP Approved	State Approved	FHWA Approved
		16-04.1 ADMIN	7/22/2016 TC	Pending		
[View Project List]	[View Change Details]	16-03.1 ADMIN	5/20/2016 TC	5/12/2016	N/A	N/A
[Draft Project List]	[Draft Change Details]	16-03 FORMAL	5/20/2016 TC	Pending		
		16-02 FORMAL	CONFORMITY 10/12/2016 MPO Policy	Pending		
[View Project List]	[View Change Details]	16-01.1 ADMIN	4/22/2016 TC	4/22/2016	N/A	N/A
[View Project List]	[View Change Details]	16-01 FORMAL	4/22/2016 TC	4/22/2016		4/25/2016
[View Project List]	[View Change Details]	16-00 ADOPTION	eTIP Rollout	4/22/2016	4/22/2016	4/22/2016

The Amendments tab contains the following information:

- **[View Project List] link:** Click on this link to view the projects included in the listed Amendment.
- **[View Change Details] link:** Click on this link to view a report containing the details of changes included in the listed Amendment.
- **[Draft Project List] link:** Click on this link to view projects pending committee, state, and federal approval in the listed Amendment.
- **[Draft Change Details] link:** Click on this link to view a report containing the details of changes pending committee, state, and federal approval in the listed Amendment.
- **Amendment:** The sequential title and type of the TIP amendment.
- **Notes:** The date of the CMAP committee meeting, either the Transportation Committee (TC) or MPO Policy Committee, at which the amendment was, or will be, considered.
- **CMAP Approved:** The date on which the amendment was or will be approved by either the Transportation (TC) or MPO Policy Committee.

- **State Approved:** The date on which the amendment was approved by the Illinois Department of Transportation for incorporation into the STIP.
- **Federal Approved:** The date on which the amendment was approved by the Federal Highway Administration (FHWA).

Advanced Search

The Advanced Search page allows users to locate project details using filters when the TIP ID is not known or multiple results are needed. Users can search using one or more fields on the search form. The more fields that are used, the narrower the results will be. Due to the unpredictable nature of the data entered, it is best to start with a broad search, using one or two fields, then add other fields to narrow down the results.

Search criteria are grouped into six themes: Project ID, Title or Description, Location/County, Lead Agency, Project Type, and Federal Funding. Each theme contains different search criteria described below. Groups can be revealed/hidden by clicking on the arrow next to the theme name. Criteria can be selected from multiple groups. Hiding a group does not clear the selections within that group. After selecting and entering the desired search criteria, click the Submit button at the bottom of the form. To modify search results, change the desired criteria and click the Submit button again. To clear all search criteria, click the Reset button.

Project ID

An advanced search by TIP ID can be completed using the Project ID search.

Title or Description

Users may search for projects based on project title or description by entering any keyword that may be contained in any of the project title, description, project location or limits fields.

Location/County

Users may search for projects based on location in three different ways: By System, Street/Road Name, and/or by County.

Systems are defined as follows:

Highway/#Road	Any road or street that is numbered, such as an interstate (I-90), US highway (US 14), state route (IL 59), or County Highway (CH 11)
Local Streets & Roads	Streets and roads that are not numbered (Main Street, First Ave, etc.). Local streets also include off-road trails (e.g., Illinois Prairie Path)
Transit	Includes bus and train routes, stops, stations, yards, etc. as well as freight rail corridors (such as CREATE) and facilities. Public transit operations and support are also included.
Non-Infrastructure	Includes educational, marketing, direct emissions reduction, and other projects that do not directly involve improvements to the transportation network.
N/A	Projects that are not location-based or are at locations, such as schools or parks, that are not included above

Street/Road Name: Can be searched by entering any keyword that may be contained in any of the project location or limits fields, including the County, Municipality and Other Project Location Information fields. Keywords entered are searched as phrases. For example, entering First Street will not return results for projects on First Av, 1st St , First St., First North Street, etc. Only projects that contain the exact phrase "First Street" will be returned. Municipalities, counties and numbered routes (I-90, US 14, CH 7, IL 62, etc.) can also be entered in this field.

County: Users can check the appropriate box(es) to search for projects wholly or partially within one, multiple, or all counties.

Municipality

Users may select one or more municipalities, townships, or other agencies from the list by checking the appropriate box(es). Note that selecting "Countywide" or "Regionwide" will not return all projects in the county/region, only those for which the lead agency selected these values for the project.

Lead Agency

Users may select one or more lead programming agency from the list by checking the appropriate box(es). The lead agency can be related to the combination of the project's geography, fund sources and work types. Typical programming responsibilities are:

Councils of Mayors	Program federal and some state fund sources when a local government is the implementing agency. The Councils represent local governments within a collar county (DuPage, Lake, etc.) or portion of Cook County (Central, Northwest, South, etc.)
---------------------------	--

Counties	Program federal and local funds when the County is the implementing agency.
CDOA	Programs aviation projects at Chicago's airports
CDOT	Programs all projects within the city of Chicago, except some CMAQ or state funded projects.
CMAP	Programs CMAQ projects that are not programmed by Councils of Mayors, IDOT or CDOT. Also programs Regionally Significant Projects included in ON TO 2050.
CTA	Programs all CTA sponsored projects, except some CMAQ projects
FHWA	Programs projects located within federal lands
IDOT	Programs most state-funded projects, by district, bureau and division
ISTHA	Programs projects on Illinois tollways
Metra	Programs all Metra-sponsored projects, except some CMAQ projects
Pace	Programs all Pace-sponsored projects, except some CMAQ projects
RTA	Programs all RTA-sponsored projects, except some CMAQ projects

Project Type

Users may select one or more project types from the list by checking the appropriate box(es).

Federal Funding

Users may select one or more federal fund sources from the list by checking the appropriate box(es). Any project that contains any financial line (including future lines) with the selected fund source will be returned. A description of current fund sources, including how they are distributed, who is responsible for programming and whether they are federal, state or local, is available on the [TIP Programmer Resources page](#) of the CMAP website.

When using Advanced Search it is important to consider that search results depend entirely on the data entered in the TIP database by programmers. For example, if the programmer did not include the marked state route number in the project description, searching by state route will not return any results. Roadway name abbreviations, such as Ave or Av, Blv or Blvd, etc. are inconsistently entered in the TIP database; omitting them from searches will produce better results. Finally, if a programmer misspelled anything when entering the project in the TIP database, the project will not be found unless the misspelling is duplicated in the search criteria.

Projects by County

The Projects by County tab allows users to view a regional map, select a county, and view a summary of the type, cost, and funding for transportation projects in the selected county. The selected county is highlighted on the map and a complete list of projects within the county is displayed below the map. The results are purely geographical and do not take lead agency into account. Regionwide projects are those that are not location specific and/or provide benefits to

the entire region. Multiple counties may be selected at the same time. Grand totals for the entire region can be viewed by selecting every category.

The summary table displays the project categories that are included in the selected location(s). The "#" column is the number of projects in each category. "Total Cost" is the total estimated cost to complete the projects, from preliminary engineering through construction. "Total Funding" is the portion of that cost that has been expended or is currently programmed in the TIP. By clicking a number in the "#" column, the list of projects below the map will be filtered by the selected project category. Users may export the data they've selected on the map at any time by clicking "Export to Excel" below the map.

Cook
 DeKalb
 DuPage
 Grundy
 Kane
 Kendall
 Lake
 McHenry
 Will
 Regionwide

DUPAGE			
Project Category	#	Total Cost	Total Funding
Bicycle & Pedestrian	58	\$73,850,643	\$72,301,643
Bridge Repair, Rehab, or Replace	20	\$58,232,585	\$40,340,585
Guideway Improvements	1	\$512,711,000	\$46,711,000
Intersection/Interchange Improvements	25	\$62,721,000	\$62,502,000
Other	1	\$1,300,000	\$1,300,000
Other Trails	1	\$150,000	\$0
Parking	1	\$433,000	\$433,000
Rail-Highway Grade Separation	1	\$36,898,000	\$36,898,001
Road Expansion	11	\$1,671,588,490	\$1,373,492,490
Road Maintenance	118	\$188,048,059	\$168,519,059
Road Modernization	14	\$1,244,414,765	\$38,414,765
Road Signals & Signs	3	\$1,337,000	\$1,337,000
Safe Routes to Schools	10	\$829,000	\$829,000
Safety	10	\$4,096,000	\$4,096,000
Signal Systems	6	\$8,409,000	\$8,409,000
Transit Operations	12	\$8,209,000	\$7,071,000
Transit Station/Stop Improvements	2	\$12,258,000	\$12,258,000
Transportation Enhancements	5	\$5,641,675	\$5,641,675
Total	299	\$3,891,127,217	\$1,870,554,218

299 Projects Listed in DUPAGE

ID	County	Lead Agency	Title	Project Type	Funding	Total Cost	Prior	Current	Future
03-13-0012	DuPage	IDOT D1 Hwys	US 20 Lake St at Gary Ave-FUTURE PROJECT	Road Modernization	Federal	\$3,100,000	0%	0%	100%
03-13-0013	DuPage	IDOT D1 Hwys	IL 59 Sutton Rd at Army Trail Rd-FUTURE PROJECT	Road Modernization	Federal	\$2,900,000	0%	0%	100%

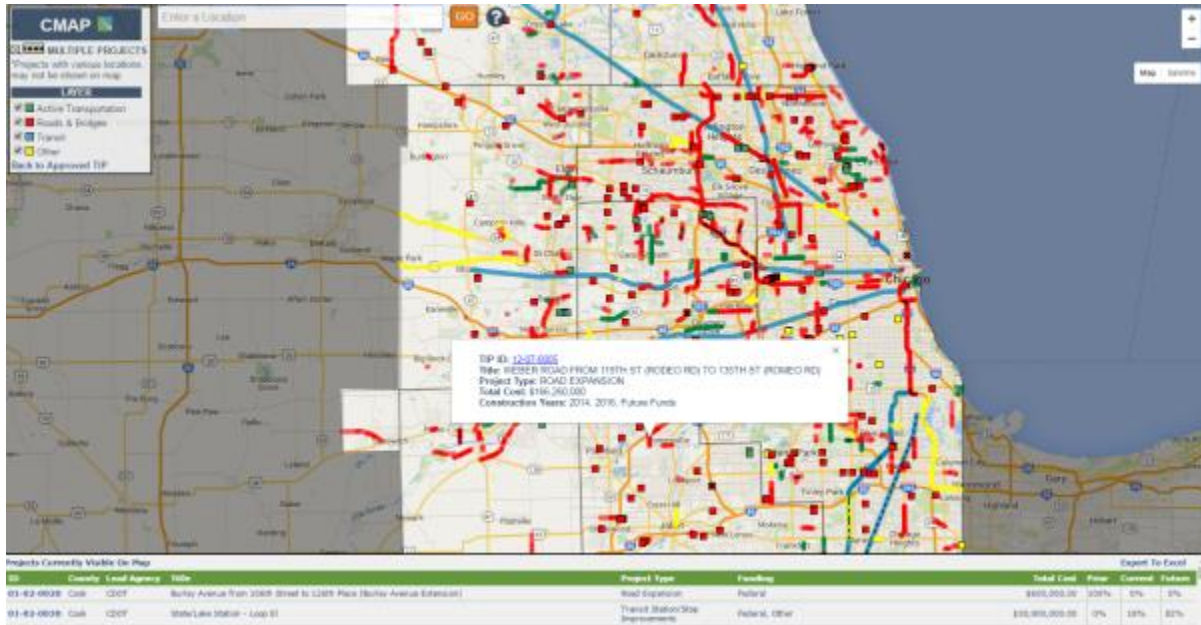
Interactive Map

The Interactive Map tab is a Google map; all standard Google Maps search and navigation methods apply. Users may also select a satellite view or street view. To return to the Approved TIP tab from the interactive map, click on the "Back to Approved TIP" link in the legend.

Projects contained in the TIP database that can be represented on a map can be found on the Interactive TIP Map by entering the address or intersection at which the project is located, then zooming in or out and clicking on the project line or point. Users may turn project type layers

on and off by checking or unchecking the appropriate boxes in the top left corner of the map. All projects that are visible on the map's current extent are listed below the map. Users may export the data they've selected on the map at any time by clicking "Export to Excel" below the map.

The project information that is displayed contains a link (on the TIP ID) to the project overview page within the TIP database in addition to the project title, type, total cost, and construction years. Projects such as "Various resurfacing in Cook County" or "Purchase Buses" cannot be represented on the map and should be located using the Advanced Search page.



Project Details

By clicking on the ID, users can access details of a project. The detail page displays the details of each individual project, as currently adopted, including a Project Overview, Funding History, and Amendment History. To return to the Approved TIP tab from any project details page, click on the "Back to Approved TIP" link.

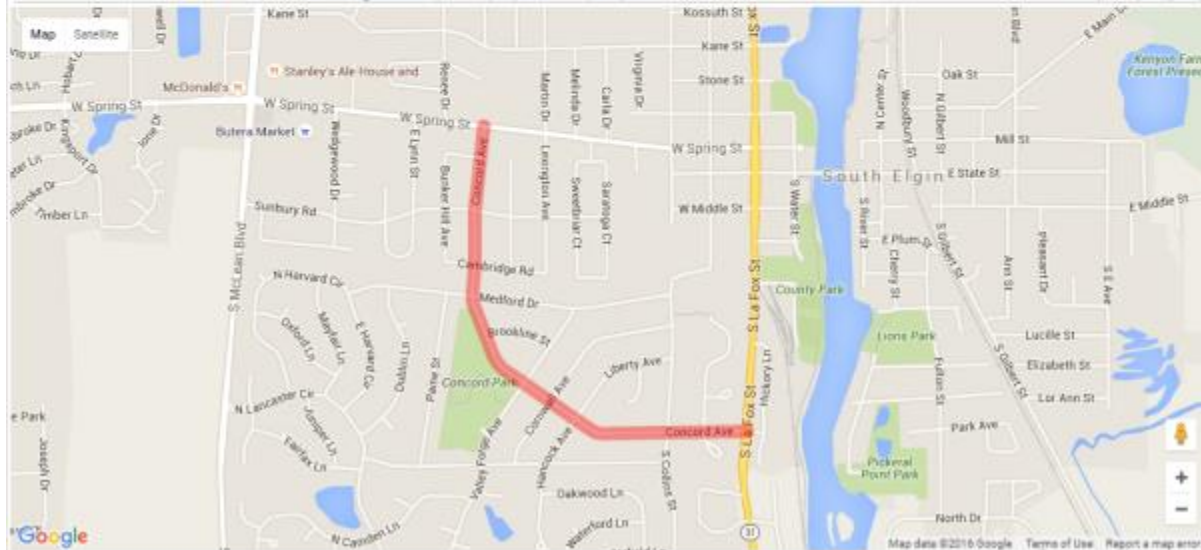
Project Overview

In addition to the basic information displayed in list view, the Project Overview page provides more detailed project information including a description of work, contact information, funding details, and a project location map.

>> Back to Approved TIP

TIP ID	09-15-0012	TIP Document	16-00	State Job #		PPS #	
Lead Agency	Kane/Kendall Council	Contact	Patrick Knapp (630) 584-1170	Municipality	South Elgin	County	Kane
Project Type	Road Maintenance	Air Quality	Exempt	Open to Traffic Year		Total Cost	\$561,400
Title	Concord Avenue from Spring Street to IL 31						
Limits	From Spring Street (PAU 1342) to IL 31 of Distance (mile) 1						
Description	Resurface						

Segment	Phase	Fund Source	Prior FFY	FFY2016	FFY2017	FFY2018	FFY2019	Future FFY	Total
ENG 2		Local Funds	\$27,000	-	-	-	-	-	\$27,000
		Total ENG 2	\$27,000	-	-	-	-	-	\$27,000
CON		Local Funds	-	\$120,350	-	-	-	-	\$120,350
CON		STP - Locally Prgmd (AC)	-	\$361,050	-	-	-	-	\$361,050
		Total Construction	-	\$481,400	-	-	-	-	\$481,400
CE		Local Funds	-	\$13,250	-	-	-	-	\$13,250
CE		STP - Locally Prgmd (AC)	-	\$39,750	-	-	-	-	\$39,750
		Total Construction Engineering	-	\$53,000	-	-	-	-	\$53,000
		Total Programmed	\$27,000	\$534,400	-	-	-	-	\$561,400



TIP ID	The unique identification number for the project within the TIP database
Lead Agency	The organization responsible for programming and managing the project in the CMAP TIP
Project Type	The category of the project, based on the primary type(s) of work being done
Title	The Lead Agency's project title, which typically includes the location and/or type of work being accomplished. If a project does not yet have any funding programmed in the TIP, the title indicates that it is a "Future Project". Once a project is substantially complete, and is not expected to experience any cost changes, the title indicates it is "Completed".
Limits	Indicates the primary location of the project
Description	A brief narrative description of the project
TIP Document	The most recently approved adoption or amendment in which the project is included
Contact	The name and phone number of the lead agency staff person that can answer questions about the project.

Air Quality	Indicates the exempt status of a project (whether the project and any subsequent changes are subject to air quality conformity analysis) and, if appropriate, the conformity status of the project.
State Job #	The State Job Number assigned to the project phase by IDOT (state Job Numbers are unique to each phase of the project)
PPS #	The Annual Program Number assigned to the project by IDOT (PPS Numbers are unique to each phase of the project)
Municipality	The municipality(ies) in which the project is located
County	The county(ies) in which the project is located
Open to Traffic Year	The calendar year in which the project is expected to be substantially complete, and open for public use. Note that most projects do not fully "close" during implementation.
Total Cost	The total cost of all phases of the project, whether included in the TIP or not.
Segment	Larger, more complex projects may be broken down into logical segments for implementation. The segments that contribute to the funding displayed for each phase and fund source are listed.
Phase	Indicates the phase funded from listed fund source. Phases are described in more detail below.
Fund Source	The source of funds for the line item. A description of current fund sources, including how they are distributed, who is responsible for programming and whether they are federal, state or local, is available on the TIP Programmer Resources page of the CMAP web site.
FFY	The federal fiscal year (FFY) in which funds for the line item will be authorized (for federal fund sources) or expended (for state or local fund sources). The federal fiscal year is from October 1 to September 30. "Prior" indicates funds were applied prior to the current TIP years; "Future" indicates funds will be applied after the current TIP years.
Total (column)	The total column is the sum of funding, by phase and fund source.
Total <phase> (row)	The total <phase> row is the sum of funding for the listed phase, in each FFY.
Total Programmed (row)	The total funding programmed in each FFY.
Map	If the project can be represented on a map, the map displayed below the project overview presents the project location. Standard Google Maps navigation applies, including zooming in/out, satellite view and street view.

Funding History

The Funding History page allows users to view the federal fiscal year, fund source, project phase, and total funding programmed for the project in each project version. The most recent programming is shown at the top of the list.

Project Overview		Funding History	Amendment History							
>> Back to Approved TIP										
VERSION	FFY	SOURCE	ENG	IMP	ENG 1	ENG 2	ROW	CON	CE	TOTAL
3	16-00 2016-2020 eTIP Rollout	Local Funds	\$0	\$0	\$0	\$27,000	\$0	\$0	\$27,000	\$27,000
3	16-00 2016-2020 eTIP Rollout	STP - Locally Prgmd	\$0	\$0	\$0	\$0	\$0	\$361,050	\$0	\$400,800
3	16-00 2016-2020 eTIP Rollout	Local Funds	\$0	\$0	\$0	\$0	\$0	\$120,350	\$0	\$133,600
TOTAL FOR VERSION 3			\$0	\$0	\$0	\$27,000	\$0	\$481,400	\$27,000	\$561,400
2	15-01 2015-2019 Imported data	Local Funds	\$0	\$0	\$0	\$27,000	\$0	\$0	\$27,000	\$27,000
2	15-01 2015-2019 Imported data	STP - Locally Prgmd	\$0	\$0	\$0	\$0	\$0	\$401,000	\$0	\$401,000
2	15-01 2015-2019 Imported data	* Local Fund Match - historical fund	\$0	\$0	\$0	\$0	\$0	\$133,000	\$0	\$133,000
TOTAL FOR VERSION 2			\$0	\$0	\$0	\$27,000	\$0	\$534,000	\$27,000	\$561,000
1	15-00 2015-2019 Imported data	Local Funds	\$0	\$0	\$0	\$23,000	\$0	\$0	\$23,000	\$23,000
1	15-00 2015-2019 Imported data	STP - Locally Prgmd	\$0	\$0	\$0	\$0	\$0	\$324,000	\$0	\$324,000
1	15-00 2015-2019 Imported data	* Local Fund Match - historical fund	\$0	\$0	\$0	\$0	\$0	\$108,000	\$0	\$108,000
TOTAL FOR VERSION 1			\$0	\$0	\$0	\$23,000	\$0	\$432,000	\$23,000	\$455,000

Version	The history of changes to projects is controlled and documented using "versions". The version number and adoption or amendment during which the version was approved is indicated.
FFY	The federal fiscal year in which the funding was programmed for that version.
Source	The source of funds of the amounts that follow.
ENG	The amount of funding for general engineering from the specified source.
IMP	The amount of funding for implementation from the specified source.
ENG 1	The amount of funding for Phase 1 Preliminary Engineering from the specified source.
ENG 2	The amount of funding for Phase 2 Design Engineering from the specified source.
ROW	The amount of funding for right-of-way from the specified source.
CON	The amount of funding for construction from the specified source.
CE	The amount of funding for Phase 3 Construction Engineering from the specified source.
Total	The total amount of funding from the specified source.
Total for Version #	The total amount of funding, by phase, for the listed version of the project.

Amendment History

The Amendment History provides a list of each Adoption or Amendment that included the project.

Project Overview		Funding History	Amendment History
>> Back to Approved TIP			
VERSION	PROJECT TITLE	STATUS	APPROVAL DATE
3	16-00 2016-2020 TIP CONCORD AVENUE FROM SPRING STREET TO IL 31	PROGRAMMED	04/22/2016
2	15-01 2015-2019 ADMIN CONCORD AVENUE FROM SPRING STREET TO IL 31	PROGRAMMED	N/A
1	15-00 2015-2019 TIP FAU 1680 CONCORD AVENUE FROM FAU 1342 SPRING STREET TO IL 31	PROGRAMMED	6/29/2015

Version	The history of changes to projects is controlled and documented using "versions". The adopted version will always be the version of the project that is presented. A listing of all project versions since the roll-out of eTIP is available on the Amendment History tab.
----------------	--

Project Title	Reflects abbreviated location data and programming agency project name data.
Status	Indicates the status of the project in the eTIP database – either "Programmed" or "Completed".
Approval Date	The date on which CMAP approved the amendment.